



August 2009

DuPont Refinish Colour Info

***ColorQuick Pro Manual
Scales Installation***

Table of contents

Table of contents	2
1. Installation of ColorQuick Pro	3
1.1. Installation of the colour retrieval program	3
2. Configuration Menu [F9]	4
2.1. Modules [F6]	4
2.1.1. Scale configuration	4
2.1.1.1. Scale Communication Test	5
2.1.1.1.1. Allow Manual Weighing	5
2.1.1.2. Scale Options	5
2.1.1.2.1. Sound when weight in tolerance	5
2.1.1.2.2. Skip display of mix	5
2.1.2. To Scale	6
Index	7

1. Installation of ColorQuick Pro

Close all Windows applications and insert CD-ROM.

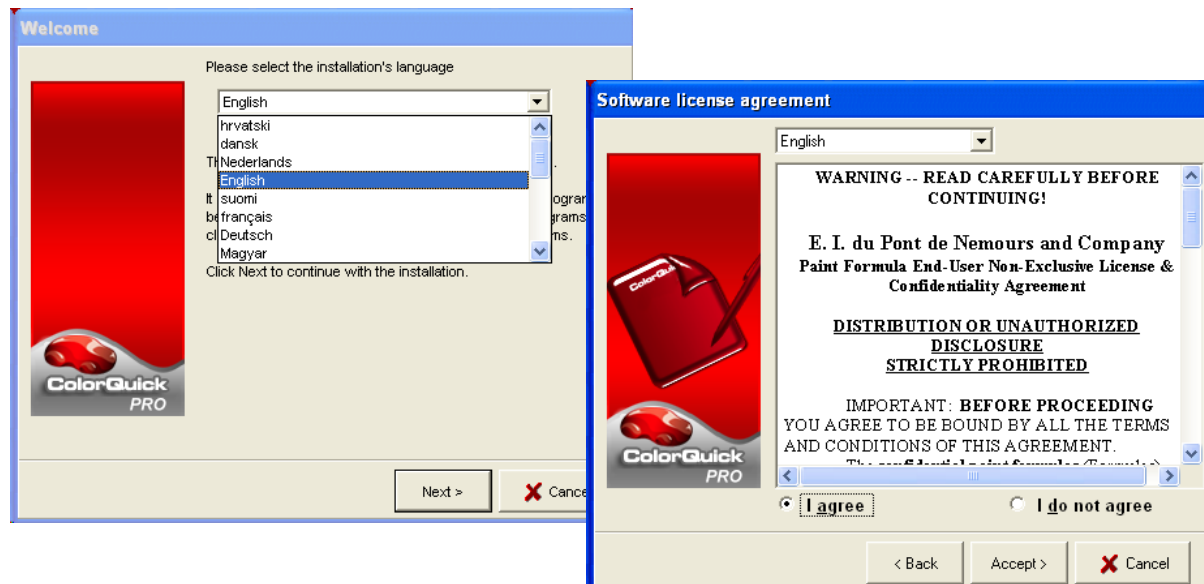
Autorun will start; select "Install ColorQuick Pro" for a new installation OR "Update ColorQuick Pro" for an update of the software.

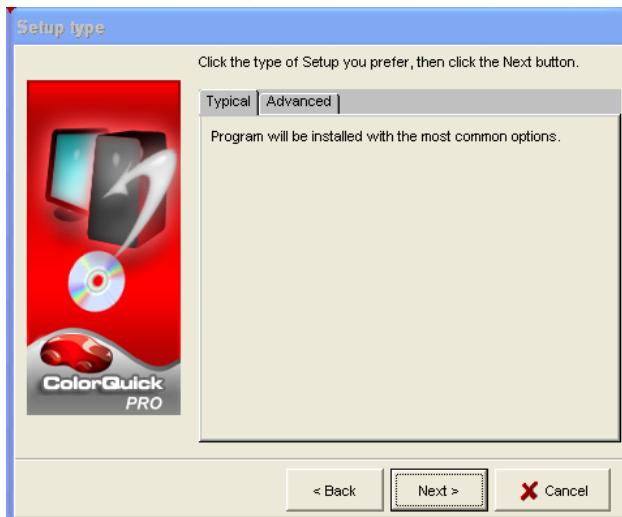
1.1. Installation of the colour retrieval program

- Click "Install/Update ColorQuick Pro" to start the setup.



- Choose the installation language, click "Next".
- Agree to the license agreement, click "Accept".
- Follow the instructions.





In the Setup screen you have the choice between “Typical” and “Advanced”.
If you select “Typical”, these items will be installed:

- Search
- Scale

Installation takes a few minutes.



Launch the program by double clicking the ColorQuick Pro – Icon that is placed on your desktop.

2. Configuration Menu [F9]

- Open ColorQuick Pro by double clicking the icon on your screen.
- Choose your language from the list (top left).
- Select the tab “Configuration Menu” or press the F9 function key.

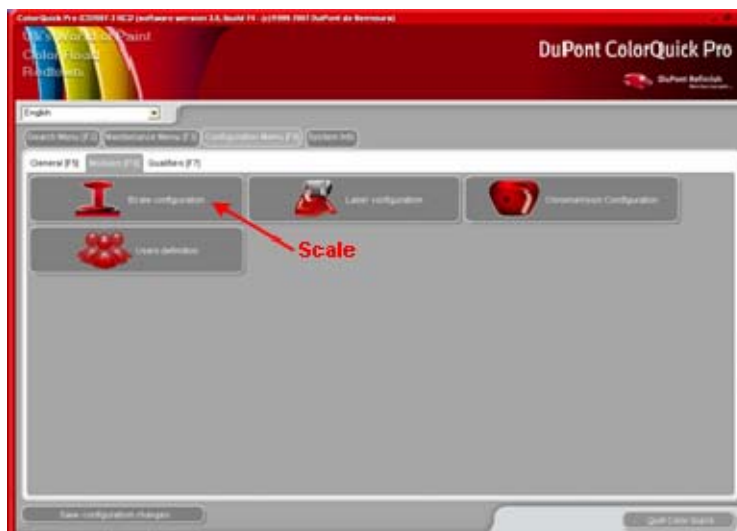
NOTE 1: The first time you launch ColorQuick Pro, the buttons for these additional features are greyed out, you cannot use them immediately. You first need to configure the connection via the configuration settings. So after installation first go to the Configuration Menu.

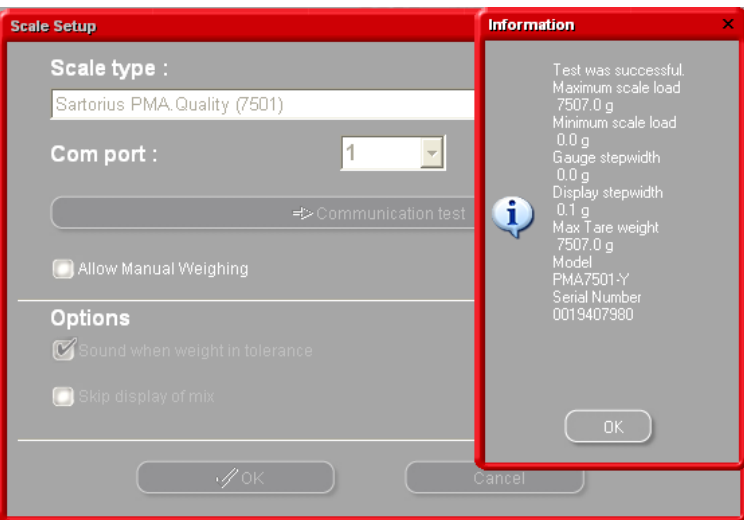


2.1. Modules [F6]

Configure the connections and options for the devices connected to your PC.

2.1.1. Scale configuration





2.1.1.1. Scale Communication Test

- Choose a scale from the list,
- Define the COM port,
- Connect your scale to the computer,
- Perform the communication test.

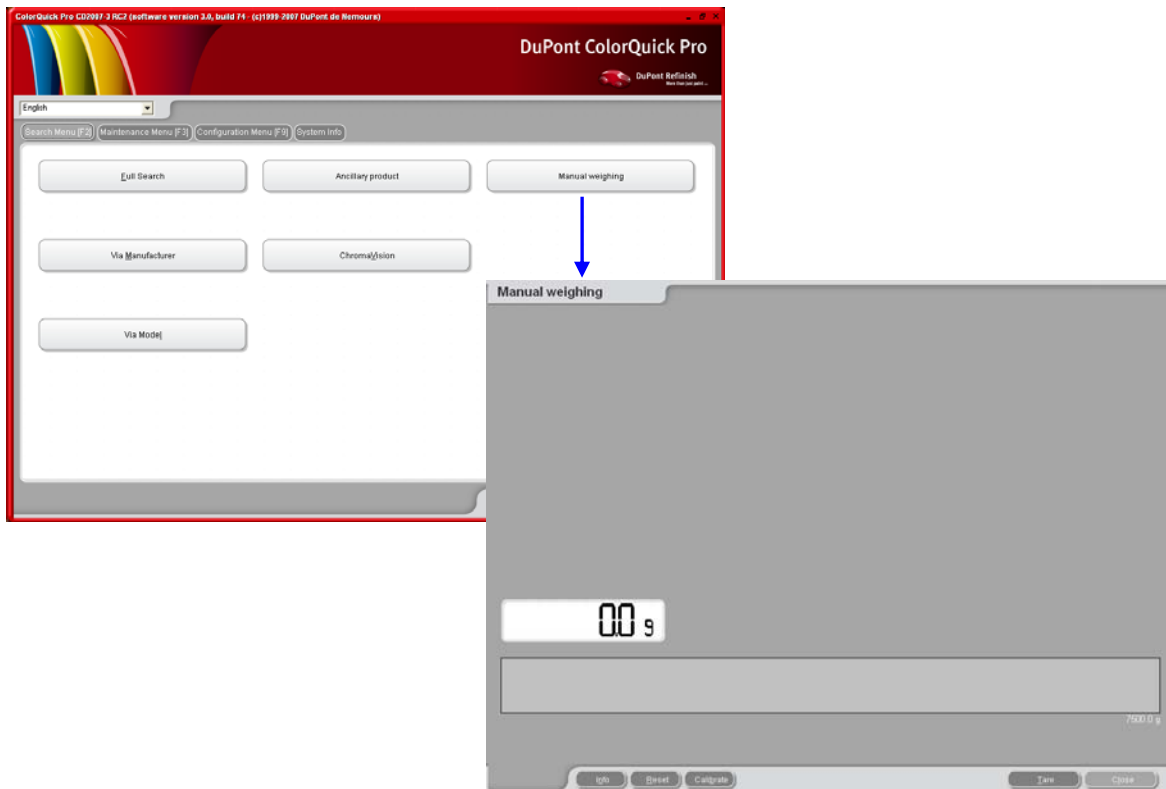
In case it is not successful check the cables and the connections and try again. If it still doesn't work, remove the power connector plug and put it back in.

When the test is successful, click "Ok".

2.1.1.1.1. Allow Manual Weighing

In case the software is installed on a PC that is connected to a scale without a display head, you may need the PC screen as a display of the weight on the scale.

When this checkbox is clicked an extra button "Manual Weighing" will appear on the Search Menu screen. This extra button allows to display the weight on the scale via the PC screen.



2.1.1.2. Scale Options

2.1.1.2.1. Sound when weight in tolerance

When reaching the required amount of paint, you will hear a beep (if the PC speaker is enabled).

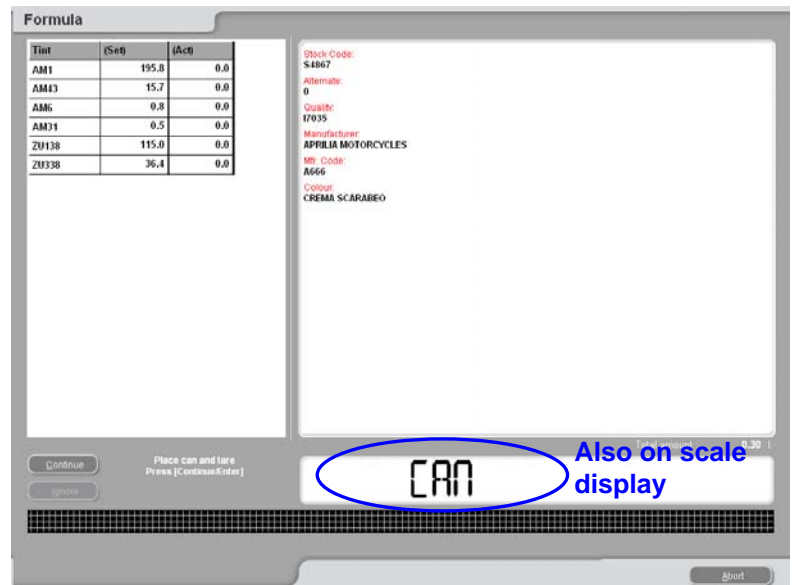
2.1.1.2.2. Skip display of mix

If this box is checked only the amounts to be weighed are displayed on the scale, but not the mix-/product names. If this box is not checked, the display of the scale will show "mix/product name / weight / name /weight..."

2.1.2. To Scale

If the button is greyed out, a scale needs to be configured in the Configuration Menu (s. Configuration Menu [F9]/Modules [F6]/2.1.1. Scale configuration p. 4).

By clicking the button "To scale", the scale screen opens, as well as the scale that you selected under "settings" starts.



If you – under *configuration menu* -> *modules* -> *user management* -> *options* - checked "Force identification on scale". This identification will be asked for before opening the scale.



Index

allow manual weighing	
scale without display	6
allow manual weighing	6
configuration	
scale	5
configuration menu	5
modules	5
installation	
of ColorQuick Pro	3
of the colour retrieval program	3
language	5
modules	5
scale	5
options	6
scale	
skip display of mix	6
weight in tolerance	6
scale communication test	5
scale configuration	5
allow manual weighing	6
communication test	5
options	6
scale weight display	6
scale weight display	
allow manual weighing	6
scale without display	6
search	
scale weight display	6
to scale	7
skip display of mix	6
sound when weight in tolerance	6
to scale	7