

# CRPLUS USERS MANUAL Colour Search

Version 2009-2

**SPIES  
HECKER**



# Contents

---

<b>CONTENTS .....</b>	<b>2</b>
<b>COLOUR SEARCH FUNCTION .....</b>	<b>3</b>
SEARCHING VIA MANUFACTURER .....	3
SEARCHING VIA COLOUR CODE .....	5
SEARCHING VIA COLOUR NAME .....	7
SEARCHING VIA PANEL NUMBER.....	9
COLOUR SEARCH RESULT SCREEN.....	11
<b>BUMPER / INTERIOR / ENGINE BAY .....</b>	<b>13</b>
<b>MULTITONE COLOUR SEARCH.....</b>	<b>14</b>
<b>KEY TO SPIES HECKER FACTORY PACKED BLACKS.....</b>	<b>16</b>
<b>USING THE COLOUR INDEX WITH CRPLUS .....</b>	<b>17</b>
<b>KEYS TO SEARCHING .....</b>	<b>19</b>
SEARCHING FOR ADD ON PARTS .....	19
<b>KEY TO ABBREVIATIONS IN CRPLUS.....</b>	<b>20</b>
SEARCHING FOR TRUCK OR BUSINESS ENTITY COLOURS .....	21
<b>CRPLUS SUPPORT .....</b>	<b>22</b>

# Colour Search Function

## SEARCHING VIA MANUFACTURER

From the CRplus workspace, click on the button named **Colors** (F2). See Figure 1-1.

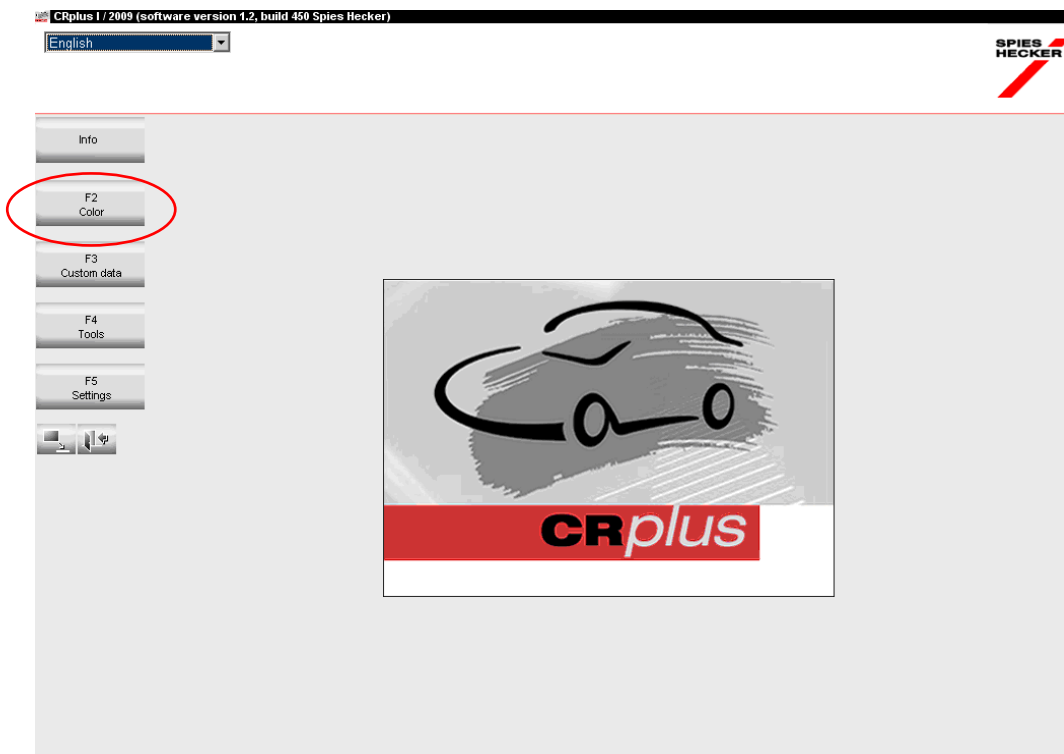


Figure 1-1

A window will appear as displayed in Figure 1-2.

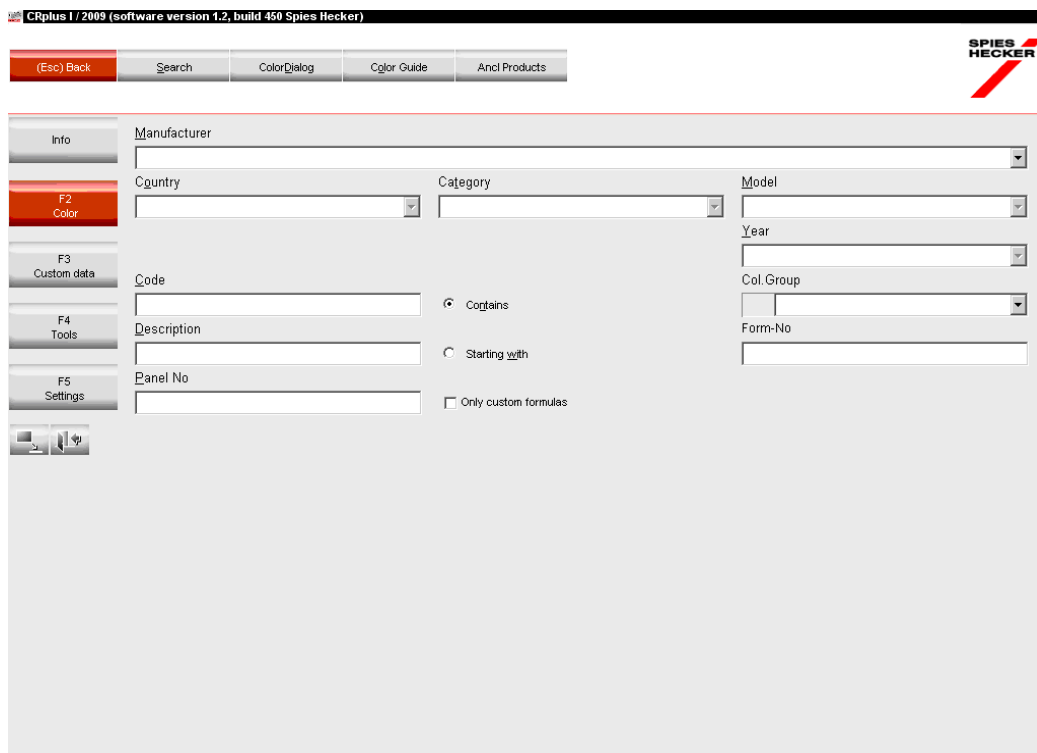


Figure 1-2

To search via **Manufacturer'**, click in the field named **Manufacturer**. Begin typing the Manufacturer name or click on the drop down box on the right and manually choose a manufacturer from the list provided

Click on the desired entry from the table. Do not use the 'Enter' key on the keyboard to select an entry as the program will assume that you have finished specifying your search criteria.

Once you have chosen the Manufacturer, type in other information such as **Colour Code'**, **Colour Name'** or **Panel Number'** in the fields provided.

Click on the button named **Search'**.

# SEARCHING VIA COLOUR CODE

From the CRplus workspace, click on the button named **Colors** (F2). See Figure 2-1.

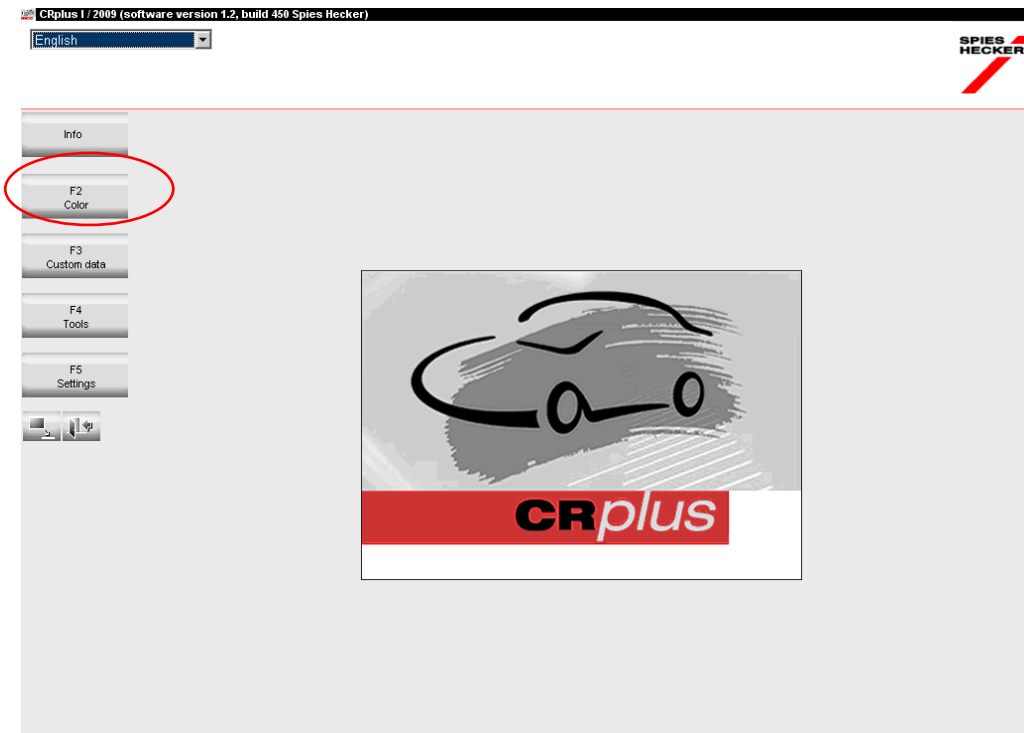


Figure 2-1

A window will appear as displayed in Figure 2-2.

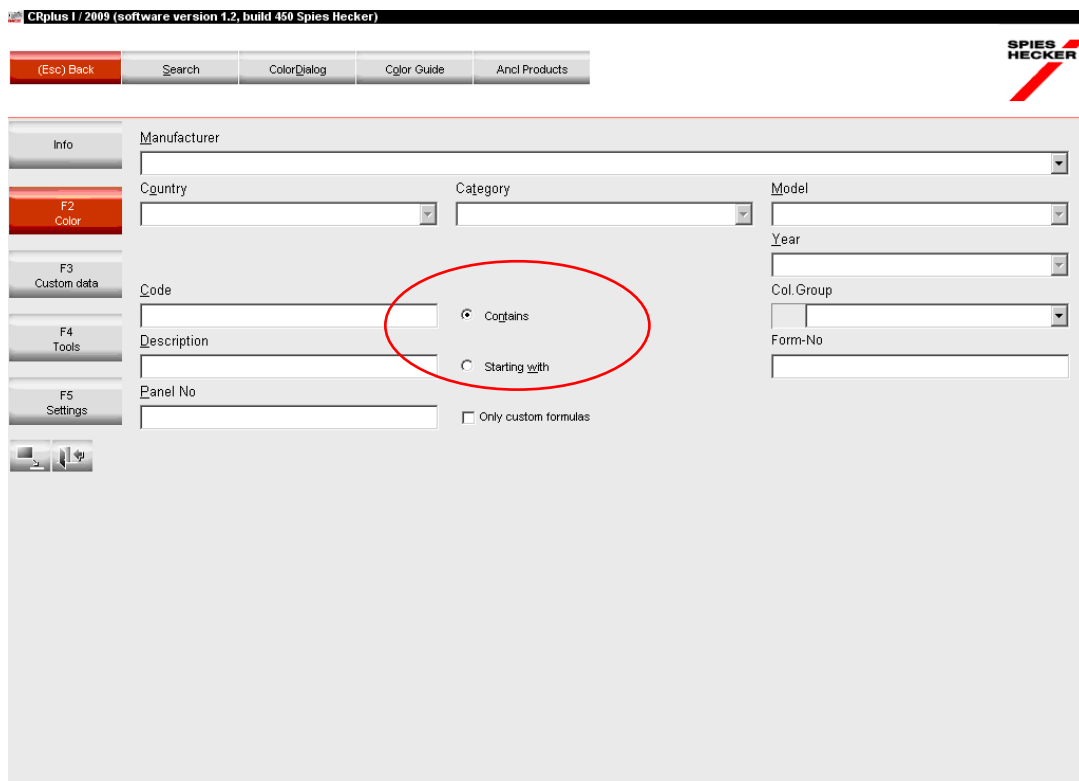


Figure 2-2

To search for a particular colour by colour **code**, enter the code or part of the code in the field named Code.

In this section, you are able to search for codes **'Starting with'** or codes that **'Contains'** the criteria you have entered. Simply click on either of the search options circled above.

Click on the button named **'Search'** or press the **'Enter'** key on the keyboard to begin the search.

# SEARCHING VIA COLOUR NAME

From the CRPlus workspace, click on the button named **Colors** (F2). See Figure 3-1.

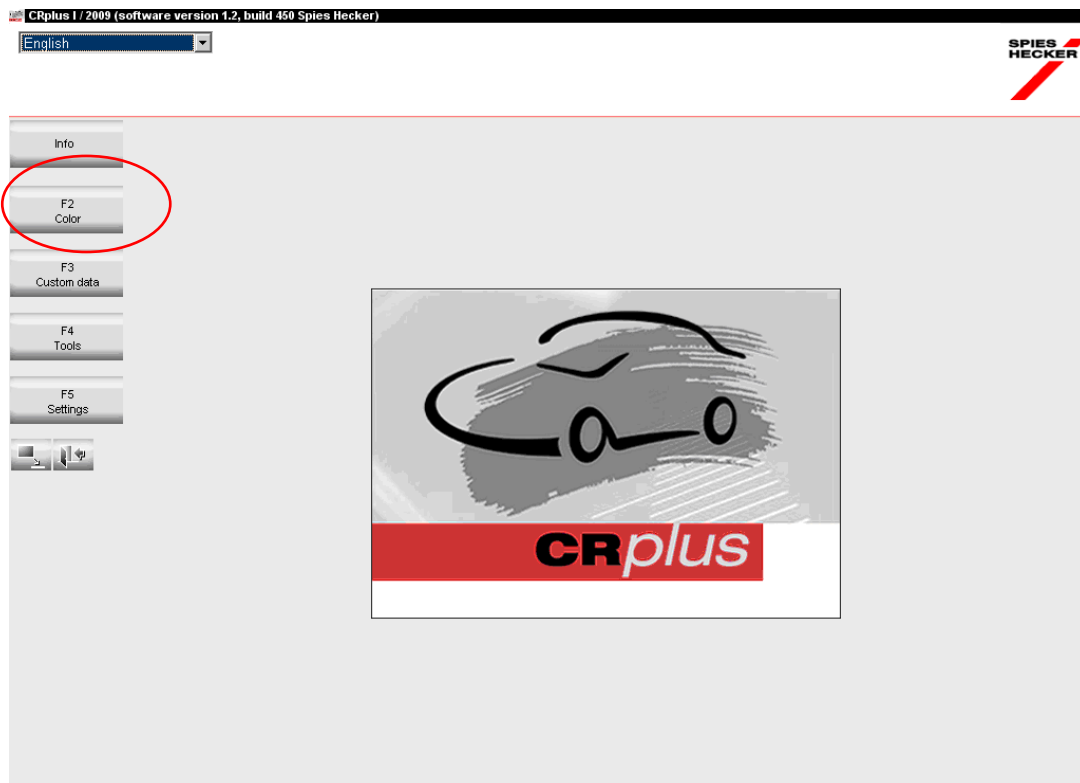


Figure 3-1

A window will appear as displayed in Figure 3-2.

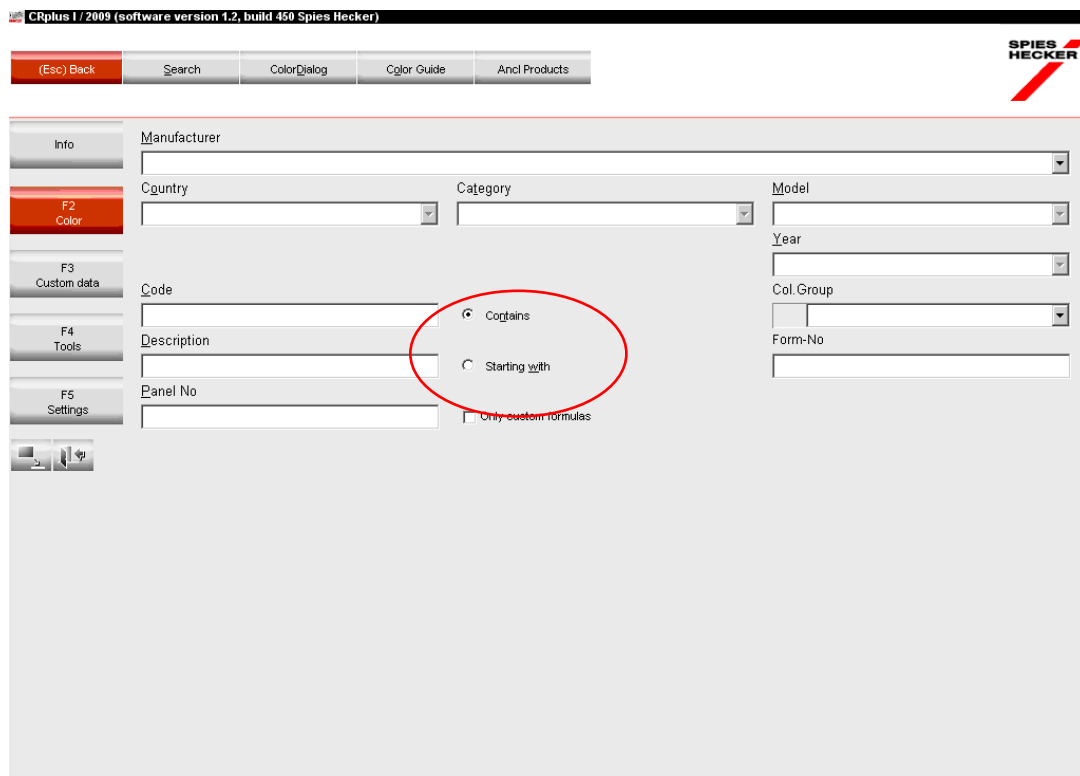


Figure 3-2

To search for a particular colour by colour '**Description**', enter the colour name or part of the colour name in the field named Description.

In this section, you are able to search for colour names '**Starting with**' the criteria you have entered or search for colour names that '**Contains**' the criteria you have entered. Simply click on either of the search options circled above.

Click on the button named '**Search**' or press the '**Enter**' key on the keyboard to begin the search.

# SEARCHING VIA PANEL NUMBER

From the CRplus workspace, click on the button named **Colors** (F2). See Figure 4-1.

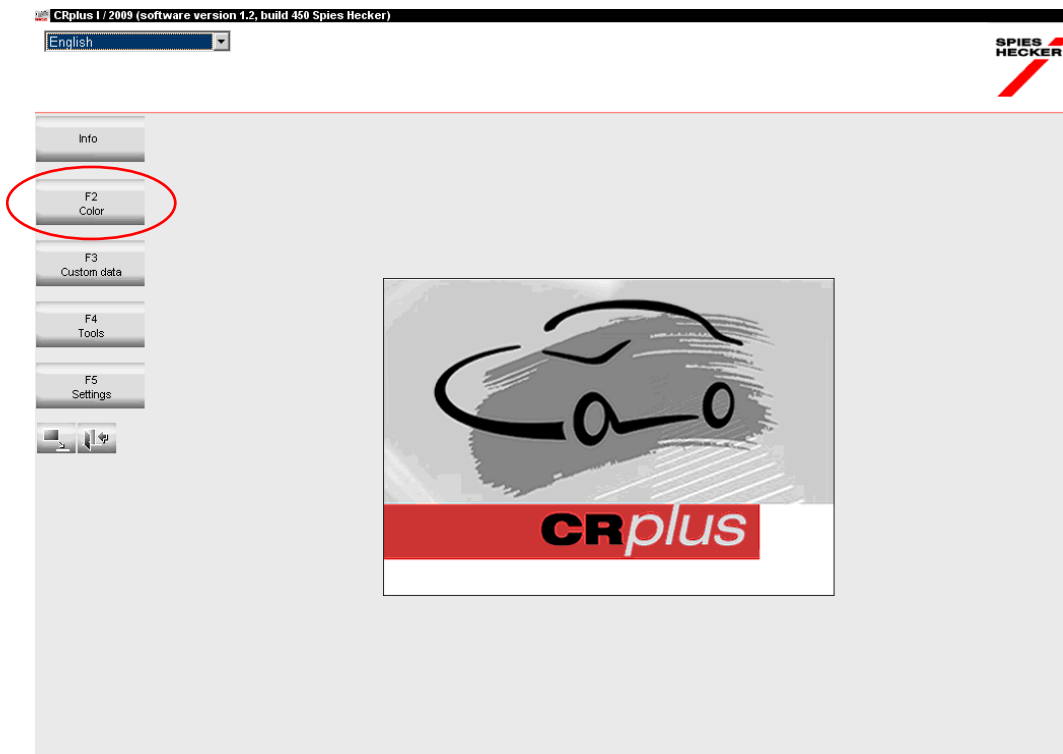


Figure 4-1

A window will appear as displayed in Figure 4-2.

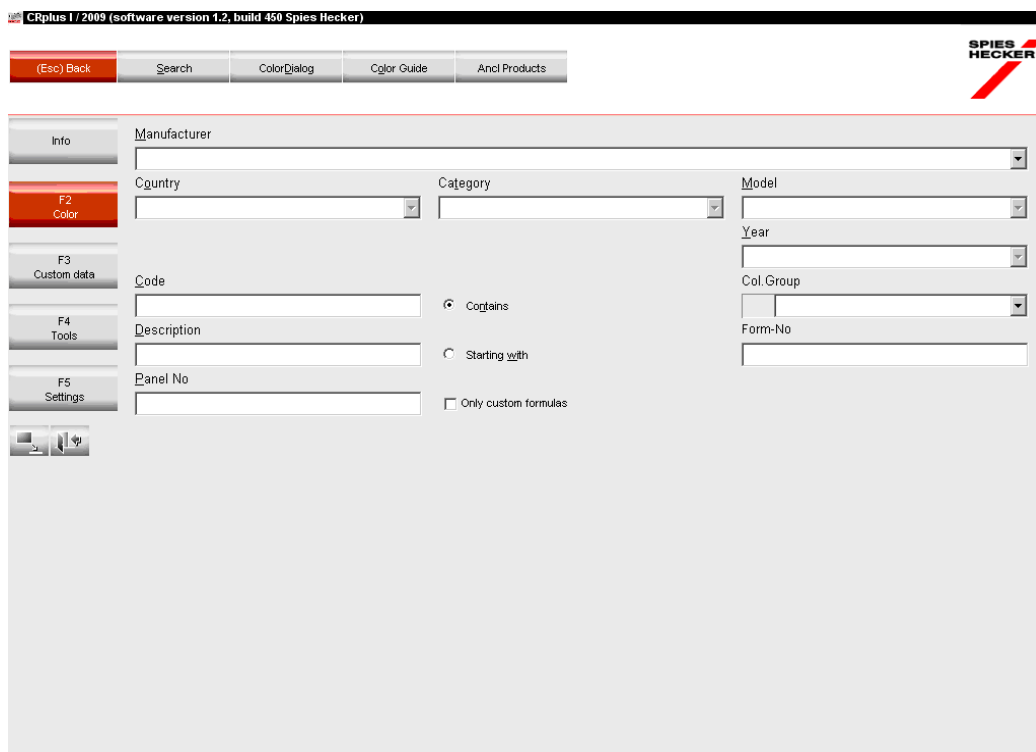


Figure 4-2

To search for a particular colour by '**Panel number**', enter the panel number for the colour in the field named **Panel No.**

Click on the button named '**Search**' or press the '**Enter**' key on the keyboard to begin the search.

# COLOUR SEARCH RESULT SCREEN

The **result area** as displayed in Figure 5-1 below includes all colours that **match the search criteria**.

To **select a colour**, click on the desired colour from the list.

Click on the button named **'Formula'** or **double click** on the listing that you have highlighted.

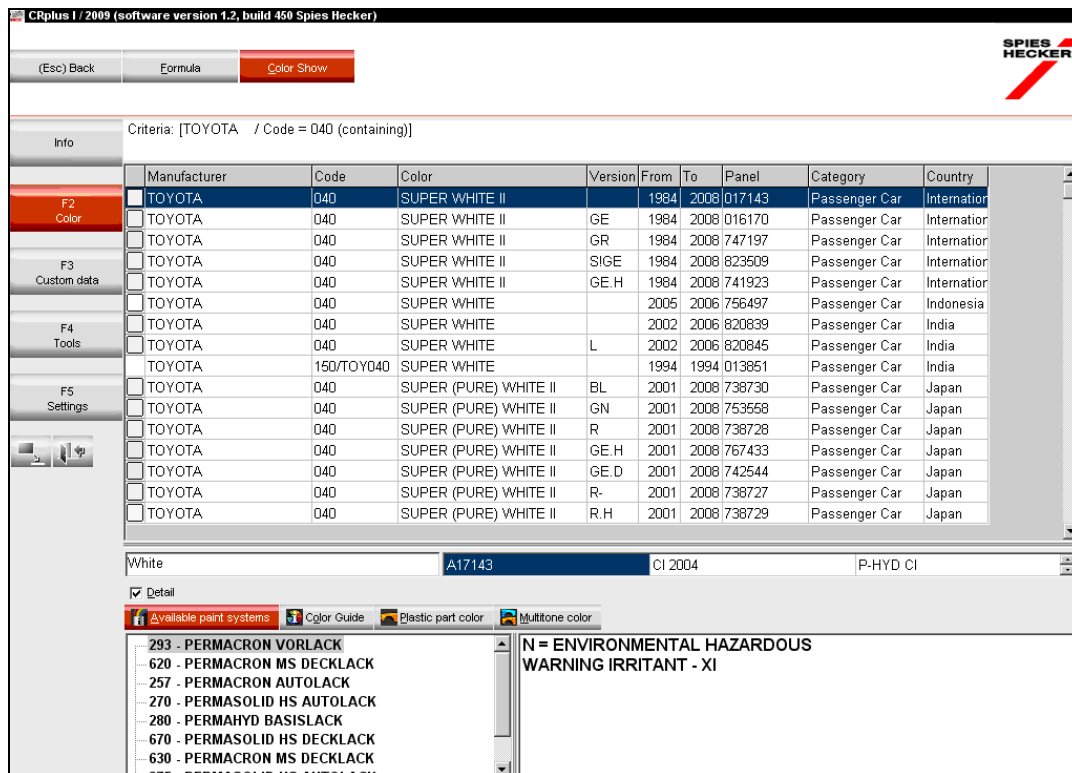


Figure 5-1

A **Colour swatch** is sometimes displayed to the left of the manufacturer name. These swatches are only an **approximation of the colour** and are only intended to give an indication of the type of colour.

For each colour, a list of **Paint Systems** that the colour can be mixed in is displayed in the area above titled **Available qualities**. Paint systems that were previously **'Excluded'** will be greyed out in this list.

Any **Warnings** or **messages** for each **Paint System** are listed in the **display box** on the right.

Column widths can be adjusted by positioning the mouse over the grey column headings until a double headed arrow appears then drag the column boundary to the desired position.

You are also able to move the columns around and place them in any order you wish. I.e. You can move Panel to the first column, Color to the second, etc. When you go back into this screen, the way up have setup stays the same.

Once you have selected a colour, the formula will be displayed. See Figure 5-2.

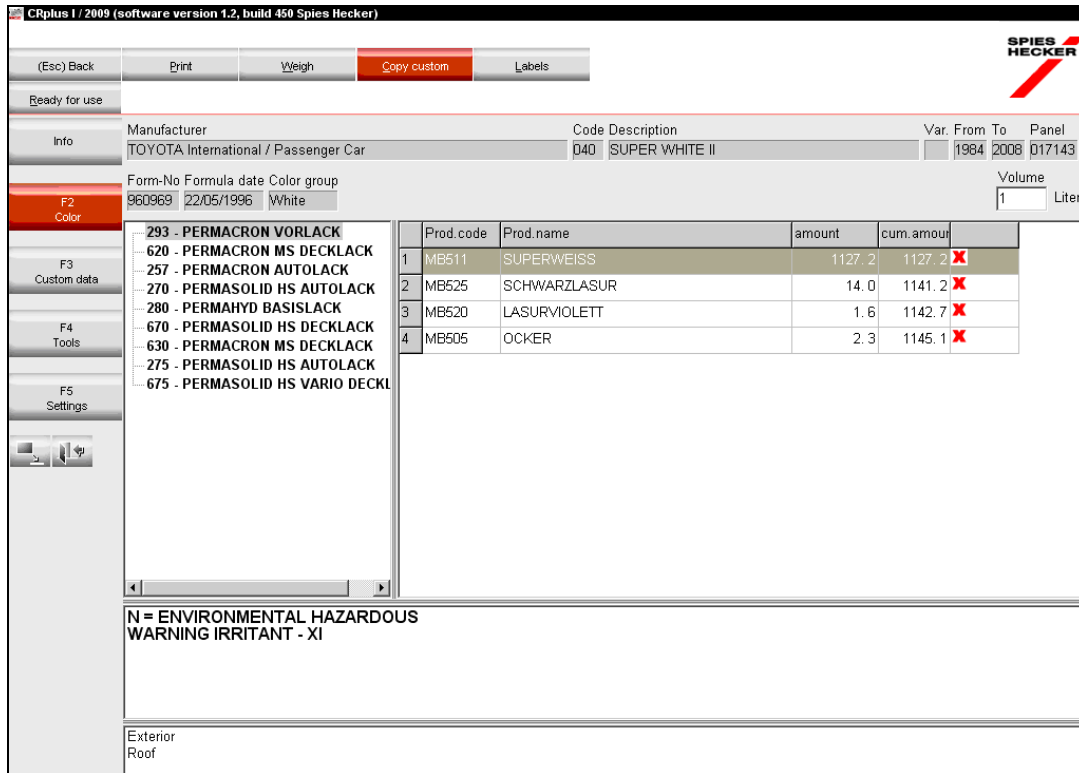


Figure 5-2

After a colour has been selected, the **Colour details** will appear at the top of the workspace.

The **quantity of paint** to be made can be set in the area titled **Volume**. Enter the desired volume in the circled section in the top right hand corner.

A list of **Paint Systems** that the colour can be mixed in is displayed at the left of the workspace area. Click on your desired **Paint System**.

Any **Warnings** or **messages** for each **Paint System** are listed in the **display box**, which is located at the bottom of the workspace.

The **formula** is displayed in the main section of the workspace.

# Bumper / Interior / Engine Bay

To view **add on part colours**, look up the exterior car colour information.

Click on the tab named **'Plastic part colour'**, which is circled in Figure 6-1 to display all other colours relating to a vehicle with the **selected body colour**. This includes plastic parts, interior, boot, bumper and bumper protection strips, trim and engine compartment colours.

To display a **'Plastic part color'** formula, **double click** on the colour you require from the lower half of the screen.

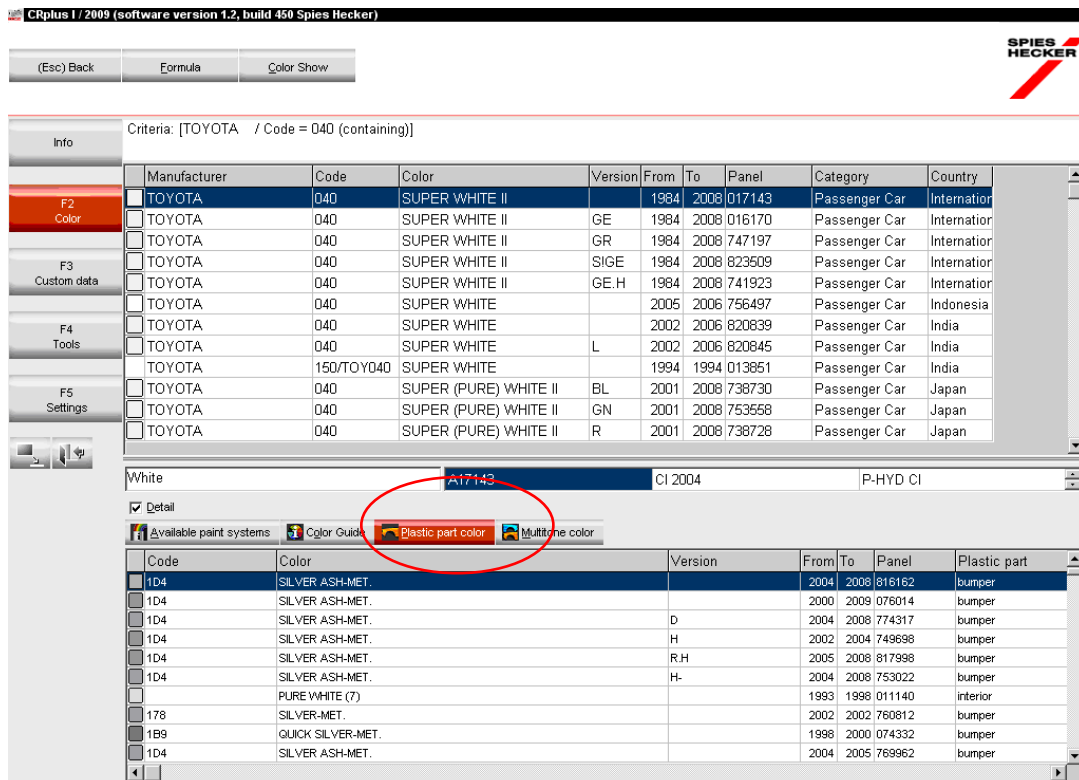


Figure 6-1

# Multitone Colour Search

CRplus I / 2009 (software version 1.2, build 450 Spies Hecker)

(Esc) Back    Formula    Color Show

**SPIES HECKER**

---

Info    Criteria: [TOYOTA / Description = = (containing)]

	Manufacturer	Code	Color	Version	From	To	Panel	Category	Country
F2 Color	TOYOTA	04	= JV + JP		1981	1982	000000	Passenger Car	Australia
	TOYOTA	24	= JR + JF				000000	Passenger Car	Australia
	TOYOTA	26	= JP + BL				000000	Passenger Car	Australia
F3 Custom data	TOYOTA	2GG	= 8L9 + YAC		2000	2002	000000	Passenger Car	Australia
	TOYOTA	2GH	= PTD4 + YAC		2000	2002	000000	Passenger Car	Australia
	TOYOTA	2GI	= 3N6 + YAC		2000	2002	000000	Passenger Car	Australia
F4 Tools	TOYOTA	2GJ	= YFB + YAC		2000	2002	000000	Passenger Car	Australia
	TOYOTA	2GK	= 3L3 + YAC		2000	2002	000000	Passenger Car	Australia
	TOYOTA	2GL	= 4M9 + YAC		2000	2002	000000	Passenger Car	Australia
F5 Settings	TOYOTA	2GN	= 6P7 + YFB		2000	2002	000000	Passenger Car	Australia
	TOYOTA	2GT	= 3N6 + YAC		2000	2002	000000	Passenger Car	Australia
	TOYOTA	2GU	= 4N5 + YAC		2000	2002	000000	Passenger Car	Australia

Detail

Available paint systems    Color Guide    Plastic part color    Multitone color

Figure 7-1

If a **Multitone code is available** from your vehicle, a search for the colour combination can be carried out as previously outlined for a general colour search as described in Figure 1-1.

**All Multitone colours** can be identified by a **specific icon** located at the start of a colour entry on the screen. See Figure 7-1.

The **colour combination** is **displayed** in the column named **Color**. To see the names of the colours in this combination, **double click** on the entry.

To **display** the two tone combination of either formulae, double click on the entry.

(Esc) Back      Formula      Color Show

Criteria: [TOYOTA / Code = 1C1 (containing)]

Manufacturer	Code	Color	Version	From	To	Panel	Category	Country
TOYOTA	1C1	= 1C1 + 178				000000	Passenger Car	International
TOYOTA	1C1	CRYSTAL SILVER-MET.		1998	2002	074453	Passenger Car	International
TOYOTA	1C1	CRYSTAL SILVER-MET.		1998	2002	760821	Passenger Car	Japan
TOYOTA	1C1	CRYSTAL SILVER-MET.	D	1998	2002	760822	Passenger Car	Japan
TOYOTA	1C1	CRYSTAL SILVER-MET.	H	1998	2002	759546	Passenger Car	Japan
TOYOTA	1C1	CRYSTAL SILVER-MET.	R	1998	2002	760823	Passenger Car	Japan
TOYOTA	1C1	CRYSTAL SILVER-MET.	H-	1998	2002	787880	Passenger Car	Japan
TOYOTA	1C1	= 1C1 + 178				000000	Passenger Car	Taiwan
TOYOTA	1C1	CRYSTAL SILVER-MET.		1998	2000	755181	Passenger Car	Taiwan
TOYOTA	1C1	CRYSTAL SILVER-MET.		1998	2000	821298	Passenger Car	Taiwan
TOYOTA	1C1	= 1C1 + 178		1999	1999	000000	Passenger Car	US / Ame
TOYOTA	1C1	CRYSTAL SILVER-MET.		1998	1998	074453	Passenger Car	US / Ame

Gray (effect)      21.08      Cl= 99 1/09      S.0720-5

Detail

Available paint systems    Color Guide    Plastic part color    **Multitone color**

Manufacturer	Code	Color	Country	Category
TOYOTA	1C1	CRYSTAL SILVER-MET.	International	Passenger C
TOYOTA	2EG	CRYSTAL SILVER-MET.	International	Passenger C
TOYOTA	2EH	CRYSTAL SILVER-MET.	International	Passenger C
TOYOTA	2EM	CRYSTAL SILVER-MET.	International	Passenger C
TOYOTA	2EX	CRYSTAL SILVER-MET.	International	Passenger C
TOYOTA	K75	CRYSTAL SILVER-MET.	International	Passenger C

Figure 7-2

Another variety of **Multitone search** is when the **Multitone colour code** is not **available** from your vehicle compliance plate.

If the main **body colour code** or **name** is known, than a general search can be carried out as shown in Figure 1-1 using the main colour details.

Click on the tab named **Multitone color** to display all the combinations that contain the selected body colour.

To **display** the actual colour **combination** for a selected Multitone, **double click** on the entry listed in the lower section of the screen. See Figure 7-2.

# Key to Spies Hecker Factory Packed Blacks

Some black colours listed in CRPlus are actually only available as a factory mixed colour which can only be purchased premixed.

You can **determine** which factory packed black **product** is required by referring to the **Key to Factory Blacks table** below. Refer to the Art. No. displayed in the lower section of the search result screen. **See circled section below.**

CRplus I / 2009 (software version 1.2, build 450 Spies Hecker)

(Esc) Back    Formula    Color Show

**SPIES HECKER**

---

Info    Criteria: [TOYOTA / Code = 202 (containing)]

Manufacturer	Code	Color	Version	From	To	Panel	Category	Country
TOYOTA	202	BLACK		2006	2008	787579	Passenger Car	China
TOYOTA	202	BLACK	BL	2006	2008	807579	Passenger Car	China
TOYOTA	202	= 606-819 + UC156		1992	1998	000000	Passenger Car	Internation
TOYOTA	202	BLACK ONYX		1980	2008	072941	Passenger Car	Internation
TOYOTA	202	BLACK ONYX	GE	1980	2008	074547	Passenger Car	Internation
TOYOTA	20264	BLUE-MET.		1983	1984	094987	Passenger Car	Internation
TOYOTA	20264	BLUE-MET.	H	1983	1984	095616	Passenger Car	Internation
TOYOTA	202	BLACK		2002	2006	756330	Passenger Car	Indonesia
TOYOTA	202	PREMIUM SOLID BLACK		2001	2001	820838	Passenger Car	India
TOYOTA	202	BLACK	D	1999	2008	774539	Passenger Car	Japan
TOYOTA	202	BLACK	BL	1999	2008	774540	Passenger Car	Japan
TOYOTA	202	BLACK	BL.H	1999	2008	787450	Passenger Car	Japan

Black    A72941    CI= 97 2/04    V.0656-1

Detail

Available paint systems    Color Guide    Plastic part color    **Multitone color**

293 - PERMACRON VORLACK  
 257 - PERMACRON AUTOLACK  
 270 - PERMASOLID HS AUTOLACK  
 280 - PERMAHYD BASISLACK  
 275 - PERMASOLID HS AUTOLACK

**READY MIX AVAILABLE, ART.NO. 32783272**

Figure 8-1

Super Deep Black	32000022 31100007
RAL9005	31793355 32783272

Figure 8-2

# Using the Colour Index with CRPlus

To **locate a colour chip** for a selected colour within CRPlus, refer to the colour chip information displayed in the centre of the screen. There may be more than one colour chip position displayed as there may be more than one chip available for this colour across the range of Standox Colour Chip Indexes.

The colour chip position information given only refers to the **Colour Index Boxes** and the **Manufacturers Colour Index Folders Vol 1-4**.

CRplus I / 2009 (software version 1.2, build 450 Spies Hecker)

(Esc) Back   Formula   **Color Show**

SPIES HECKER

Info   Criteria: [TOYOTA / Code = 040 (containing)]

	Manufacturer	Code	Color	Version	From	To	Panel	Category	Country
F2 Color	<input type="checkbox"/> TOYOTA	040	SUPER WHITE II		1984	2008	017143	Passenger Car	Internatio
	<input type="checkbox"/> TOYOTA	040	SUPER WHITE II	GE	1984	2008	016170	Passenger Car	Internatio
	<input type="checkbox"/> TOYOTA	040	SUPER WHITE II	GR	1984	2008	747197	Passenger Car	Internatio
F3 Custom data	<input type="checkbox"/> TOYOTA	040	SUPER WHITE II	SIGE	1984	2008	823509	Passenger Car	Internatio
	<input type="checkbox"/> TOYOTA	040	SUPER WHITE II	GE.H	1984	2008	741923	Passenger Car	Internatio
	<input type="checkbox"/> TOYOTA	040	SUPER WHITE		2005	2006	756497	Passenger Car	Indonesia
F4 Tools	<input type="checkbox"/> TOYOTA	040	SUPER WHITE		2002	2006	820839	Passenger Car	India
	<input type="checkbox"/> TOYOTA	040	SUPER WHITE	L	2002	2006	820845	Passenger Car	India
	<input type="checkbox"/> TOYOTA	150/TOY040	SUPER WHITE		1994	1994	013851	Passenger Car	India
F5 Settings	<input type="checkbox"/> TOYOTA	040	SUPER (PURE) WHITE II	BL	2001	2008	738730	Passenger Car	Japan
	<input type="checkbox"/> TOYOTA	040	SUPER (PURE) WHITE II	GN	2001	2008	753558	Passenger Car	Japan
	<input type="checkbox"/> TOYOTA	040	SUPER (PURE) WHITE II	R	2001	2008	738728	Passenger Car	Japan

White   A17143   CI 2004   P-HYD CI

Detail

Available paint systems   Color Guide   Plastic part color   Multitone color

293 - PERMACRON VORLACK  
620 - PERMACRON MS DECKLACK  
257 - PERMACRON AUTOLACK  
270 - PERMASOLID HS AUTOLACK  
280 - PERMAHYD BASISLACK  
670 - PERMASOLID HS DECKLACK  
630 - PERMACRON MS DECKLACK  
275 - PERMASOLID HS AUTOLACK  
675 - PERMASOLID HS VARIO DECKLACK

N = ENVIRONMENTAL HAZARDOUS  
WARNING IRRITANT - XI

Figure 9-1

The Colour Index position information can be presented in up to three formats:-

**FORMAT USED FOR CHIPS LOCATED IN RED AND WHITE COLOUR INDEX BOXES**

**b.ppp-c (Type A Format) – EXAMPLE V.0648-1**

where:-                    b        =        V variant (Red) or **S** standard box (White)  
                              pppp    =        fan deck **page number**  
                              c        =        colour **chip position** on the page

**FORMATS USED FOR CHIPS LOCATED IN THE MANUFACTURERS COLOUR INDEX FOLDERS**

**xx pp.yy.cc (Type B1 Format) – EXAMPLE 87 01.92.02**

where:-                    xx        =        N/A  
                              pp        =        the **sub page number** shown after the slash on the  
actual page  
                              yy        =        the **year page**  
                              cc        =        the colour **chip position** on the page

**xx pp.00.cc (Type B2 Format) – EXAMPLE 87 11.00.07**

where:-                    xx        =        N/A  
                              pp        =        the **page number**  
                              00        =        refers to pages named 1/0  
                              cc        =        the colour **chip position** on the page

# Keys to Searching

## SEARCHING FOR ADD ON PARTS

If you do not have a body code or colour name for your vehicle, you may still be able to determine which engine bay or bumper colour is on your vehicle. Carry out the following search to display a listing of all of the Ford Australia Engine Bay colours.

Select your **Manufacturer**.

Type the appropriate key, exactly as displayed, for the part you are painting into the field named colour. **See table below.**

Click on button named **Search**.

The screenshot shows the 'ColorDialog' window in the CRplus I / 2009 software. The 'Manufacturer' field is set to 'FORD\_AUSTRALIA'. The 'Country' and 'Category' fields are empty. The 'Model' field is empty. The 'Year' field is empty. The 'Col.Group' field is empty. The 'Form-No' field is empty. The 'Description' field contains '(2)'. The 'Code' field is empty. The 'Panel No' field is empty. The 'Contains' radio button is selected. The 'Starting with' radio button is unselected. The 'Only custom formulas' checkbox is unselected. The 'Search' button is highlighted in red. The 'Spies Hecker' logo is in the top right corner.

Figure 10-1

**HINT:** YOU CAN CARRY OUT THIS TYPE OF SEARCH FOR ANY OF THE SPECIFIC FORMULA TYPES LISTED IN THE KEY TO ABBREVIATIONS BOX BELOW. JUST SUBSTITUTE THE REQUIRED ABBREVIATION IN PLACE OF THE (2).

# Key to Abbreviations in CRPLUS

<b>(2c)</b>	Original colour on vehicle is painted in 2 stage solid colour or COSB.
<b>(m)</b>	Matted original reference standard from manufacturer
<b>(s)</b>	Textured original reference standard from manufacturer
<b>(1)</b>	Add on parts
<b>(2)</b>	Engine compartment
<b>(4)</b>	Boot
<b>(7)</b>	Interior
<b>/H</b>	Lighter variant
<b>/BR</b>	Browner variant
<b>/F</b>	Paler variant
<b>/L</b>	Brighter variant
<b>/D</b>	Darker variant
<b>/R</b>	Redder variant
<b>/GE</b>	Yellower variant
<b>/GN</b>	Greener variant
<b>/GR</b>	Greyer variant
<b>/BL</b>	Bluer variant
<b>/S!H</b>	Lighter Service match – matched to one off sample supplied by customer.
<b>/S!BR</b>	Browner Service match – matched to one off sample supplied by customer.
<b>/S!F</b>	Paler Service match – matched to one off sample supplied by customer.
<b>/S!....</b>	Every time you see the symbol S! preceding a variant description, this is in fact only a service match, which means this is not a proven variant across many vehicles but is just a one off diversion from the standard colour. These colours may only be available in one paint quality and no colour chips will be produced.

# SEARCHING FOR TRUCK OR BUSINESS ENTITY COLOURS

Type in the name of a **Fleet/truck/Tractor/Commercial manufacturer** or **business entity** such as **Cadbury** or **NSW Fire** in the field named **Code**.

Click on the button named **Search**.

CRplus I / 2009 (software version 1.2, build 450 Spies Hecker)

(Esc) Back Search ColorDialog Color Guide Anel Products

SPIES HECKER

Info Manufacturer

F2 Color

F3 Custom data

F4 Tools

F5 Settings

Country Category Model

Year

Code

Description CADBURY

Panel No

Form-No

Contains  Starting with  Only custom formulas

Figure 11-1

# CRPlus Support

For more information or enquiries contact:

## SALES / SOFTWARE:

Your Spies Hecker Business Manager,  
Representative or Distributor

## PENTAQ HARDWARE:

Pentaq Technology Pty Ltd  
02 9821 4588