

CRPLUS USERS MANUAL Scales

Version 2009-2

**SPIES
HECKER**



Contents

CONTENTS	2
STANDARD INSTALLATION OF CRPLUS	3
UPDATING CRPLUS.....	9
SYSTEM SETTINGS.....	10
SCALES SETUP	10
VIRTUAL SCALE	12
CRPLUS SUPPORT	13

Standard Installation of CRPLUS

(Not including Spectrophotometer, Pricing or Product Mixing Installation and additional modules)

Ensure that there are **no applications running**.
Insert the CD marked **CRPlus** into the CD-ROM drive.

If setup does not start automatically, follow the steps outlined below:
Double click on **My Computer** from your windows desktop.
Double click on your **CD Rom Drive letter**, e.g. D:\
Double click on **Setup.exe**.

Installation will start automatically, the image shown in Figure 1-1 will appear.

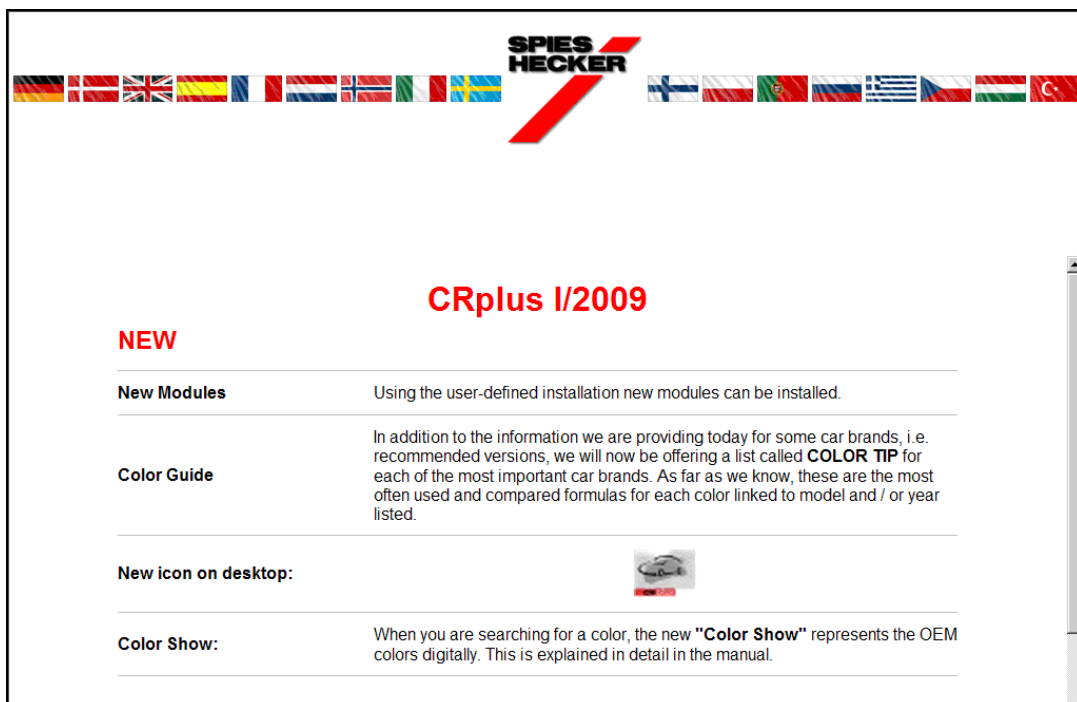


Figure 1-1

Scroll down and tick the box 'I read the Update Information!!' See Figure 1-2.

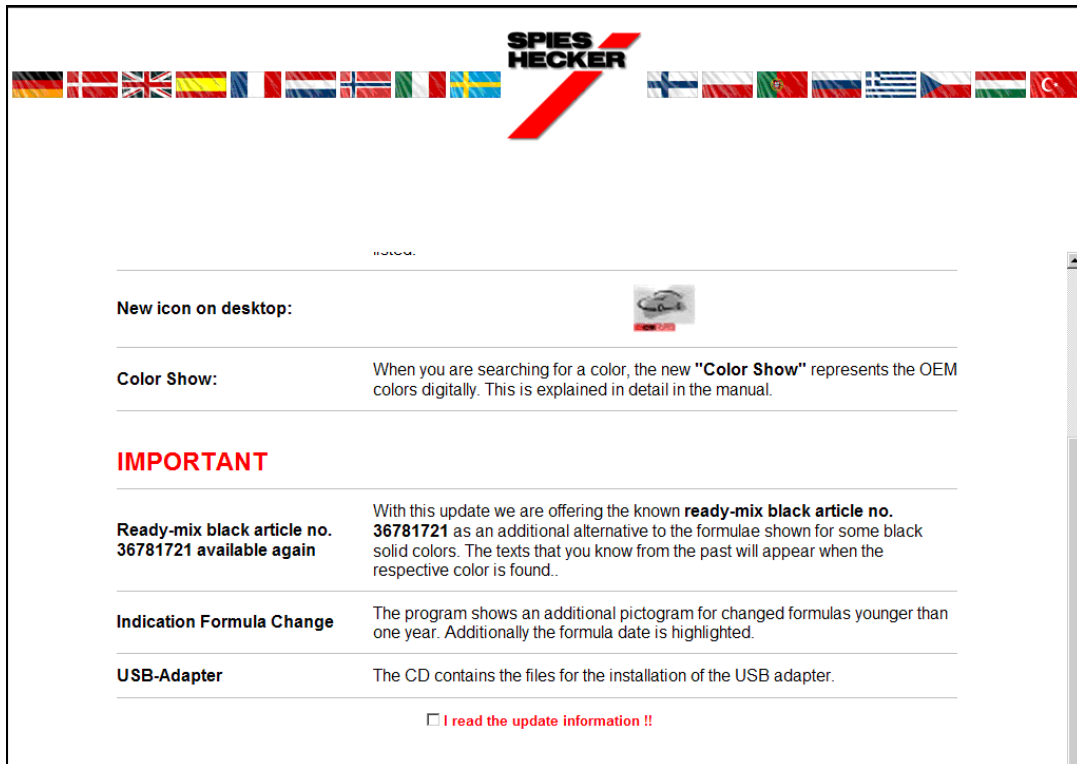


Figure 1-2

Click on the 'Weiter/Next' button at the bottom of the page. See Figure 1-2 A.

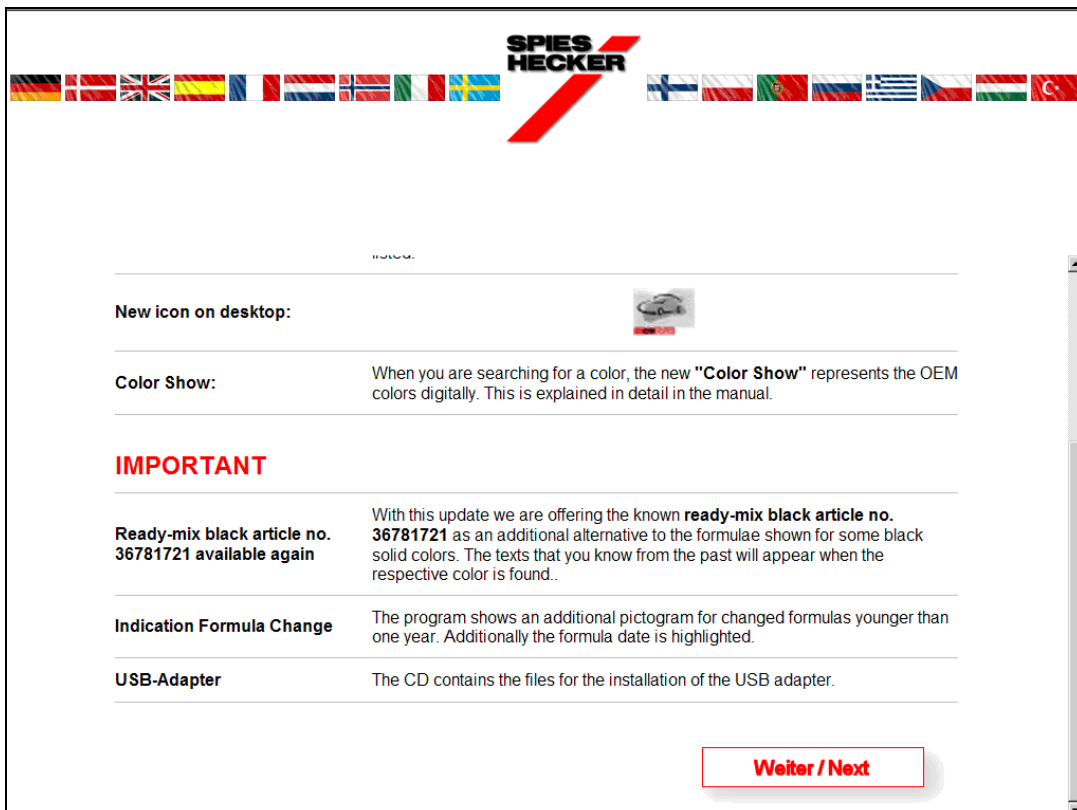


Figure 1-2A

When you click on the button named **'Weiter/Next'**, the image displayed in Figure 1-3 will appear.

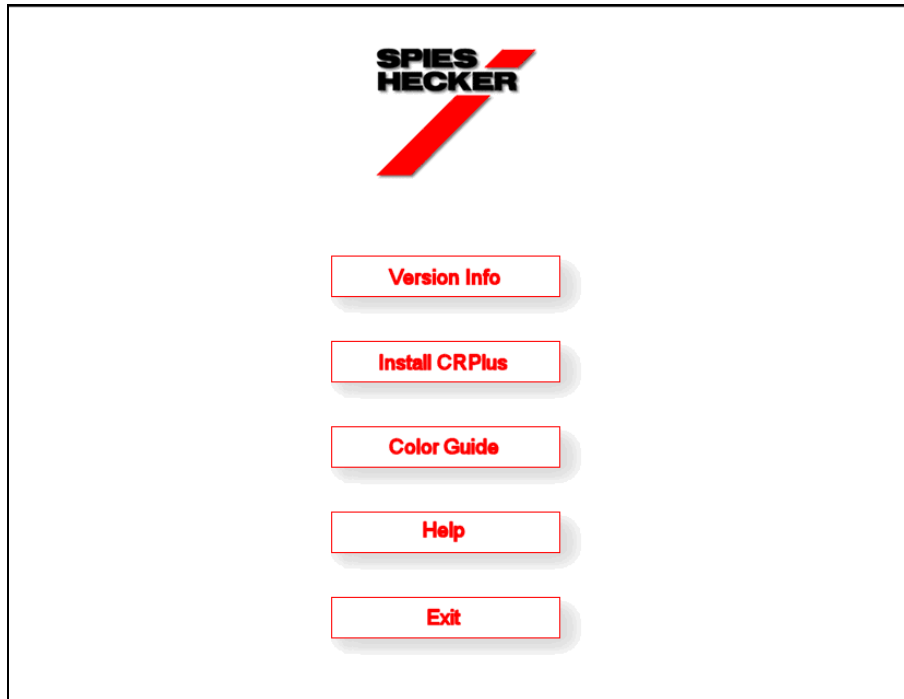


Figure 1-3

Click on the button named **'Install CRplus'**.

A dialog box titled **Welcome** will appear. See Figure 1-4.

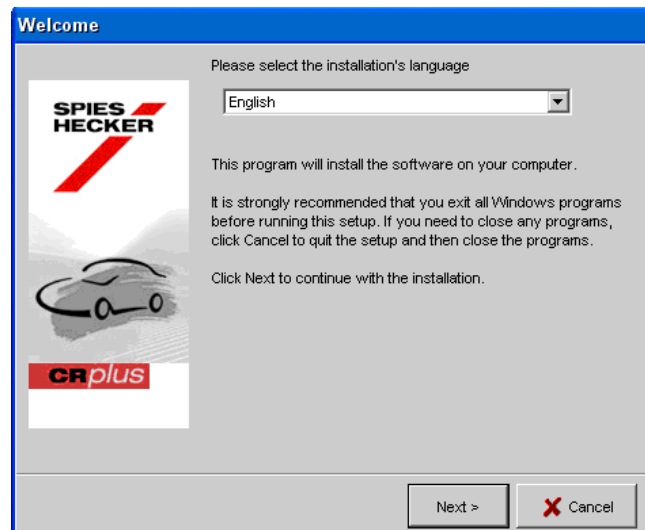


Figure 1-4

Ensure that the selected installation language is **'English'**.

Click on the button named **'Next'**.

A dialog box titled **'Software licence agreement'** will appear. See Figure 1-5.

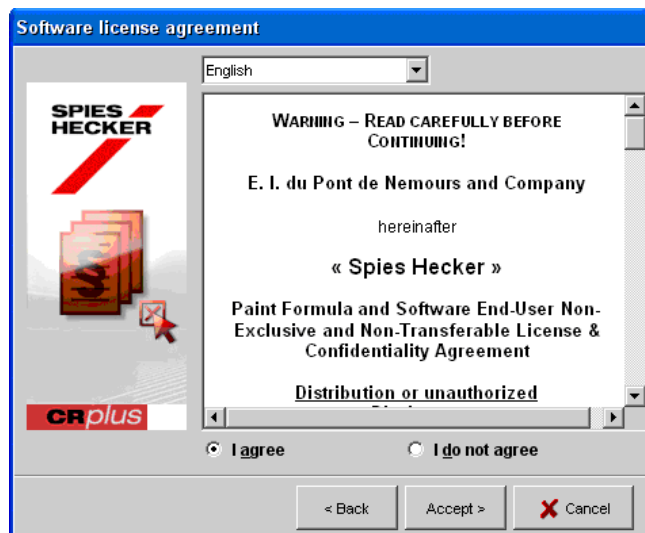


Figure 1-5

Select the option **'I agree'** for the Spies Hecker **Software licence agreement**.

Click on the button named **'Accept'**.

A dialog box titled **'Choose Destination Location'** will appear. See Figure 1-6.

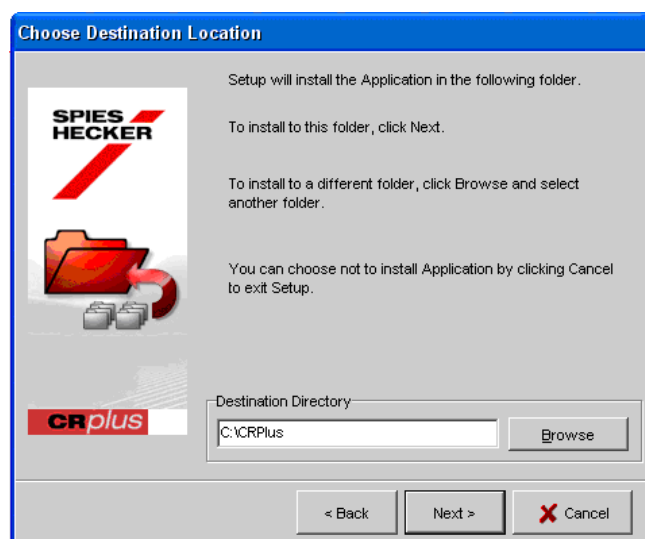


Figure 1-6

Click on the button named **'Next'**.

A dialog box titled 'Setup type' will appear. See Figure 1-7.

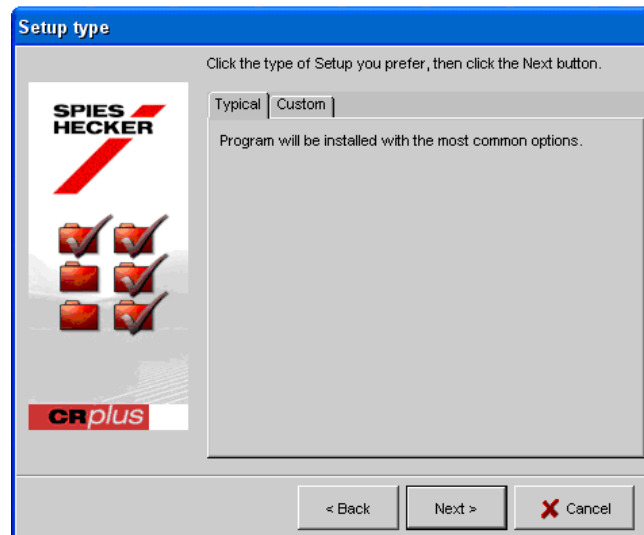


Figure 1-7

Click on the tab named 'Typical'.

Click on the button named 'Next' for the following 2 screens. See Figure 1-7 A and 1-7 B.

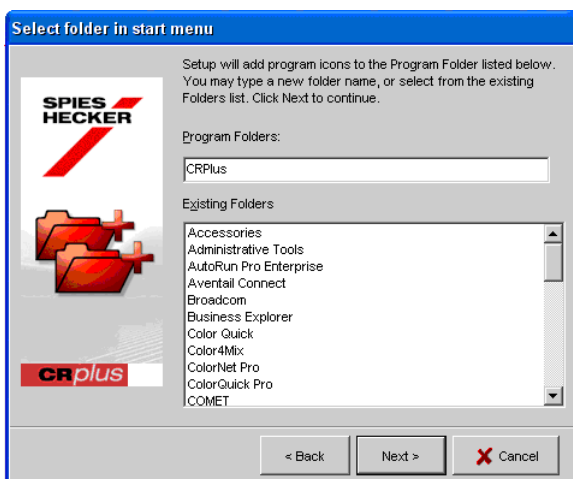


Figure 1-7A

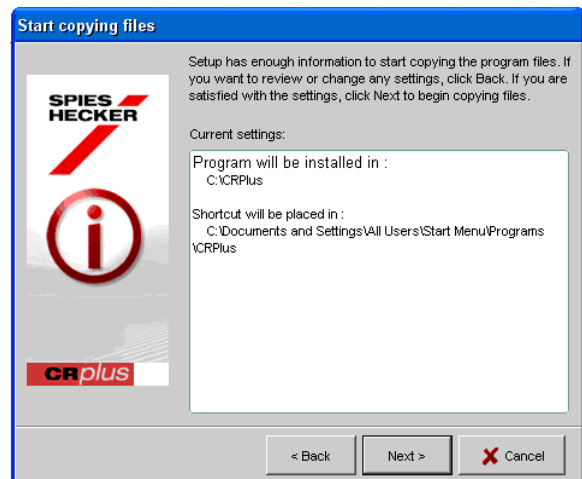


Figure 1-7B

A dialog box titled 'Copying installation files' will appear. See Figure 1-8.

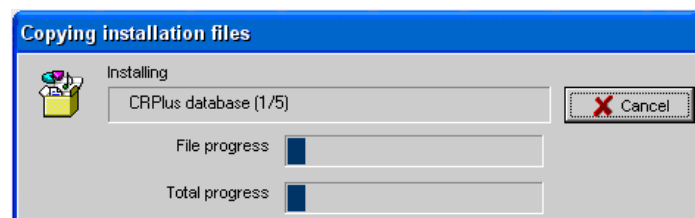


Figure 1-8

A visual gauge will appear to indicate the **status of the installation**.

A dialog box titled '**Setup complete**' will appear. See Figure 1-9.

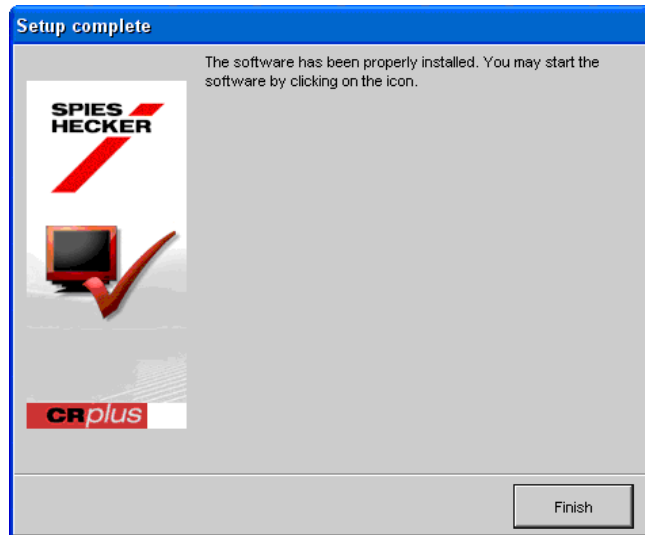


Figure 1-9

Click on the button named '**Finish**'.

You will now have a **CRPlus** icon on your desktop.

Updating CRPlus

The process for an **update** is the same as an initial installation. You should update the software in update order. Do not miss any updates as this may result in lost data or the program not to respond correctly.

Follow instructions in Section 1 from Figure 1-1 to Figure 1-9.

Before you start any updates, you should back up your personal database. Any **Custom Data** you may already have within CRplus will be **automatically backed up and re-imported**.

To see if your update has been successful, check the **program version** from the top left hand corner from the CRplus workspace title bar.



Figure 2-1

System Settings

SCALES SETUP

From the CRplus workspace, click on the button named 'Settings' (F5). See Figure 3-1.

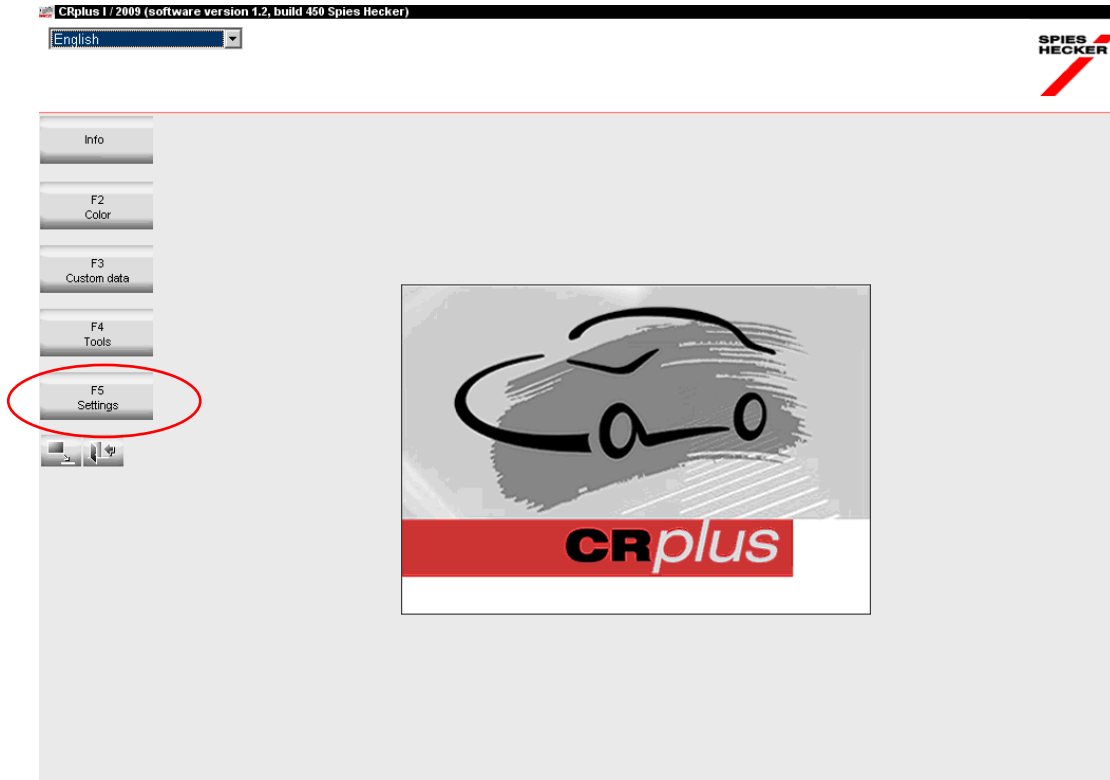


Figure 3-1

A window will appear as displayed in Figure 3-2.

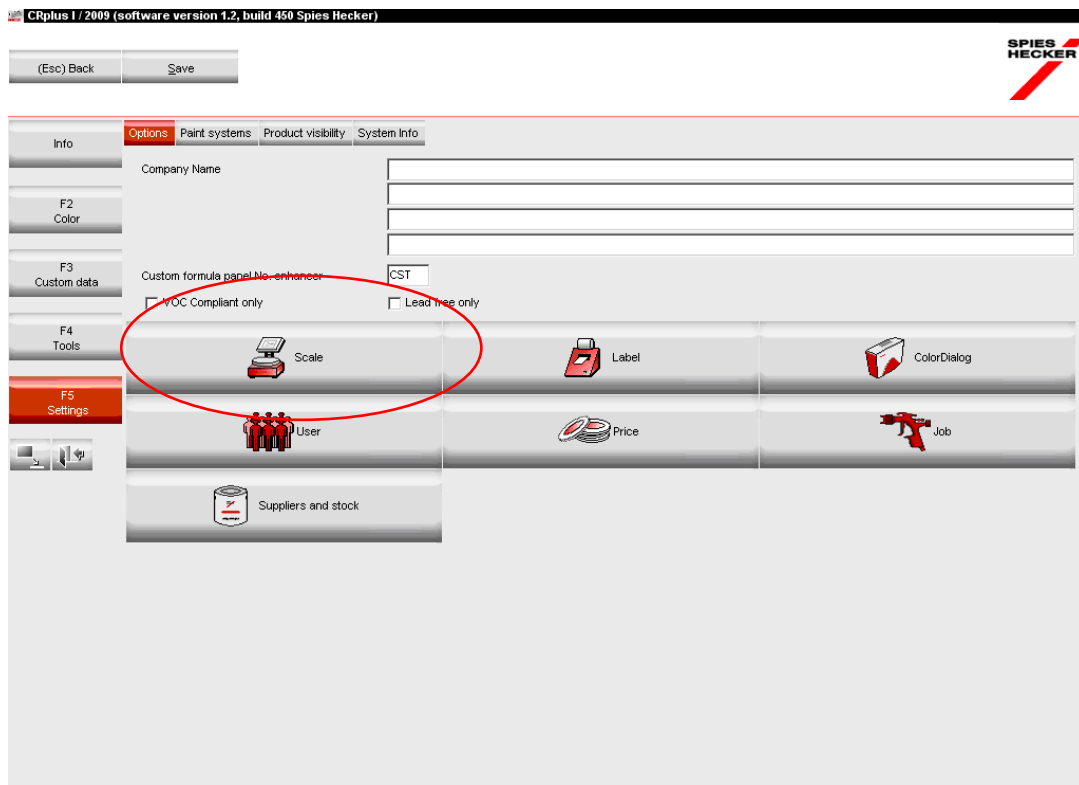


Figure 3-2

Ensure that the **'Options'** tab is selected.
Click on the button named **'Scale'**. See Figure 3-2.

A dialog box titled **'Scale settings'** will appear. See Figure 3-3.

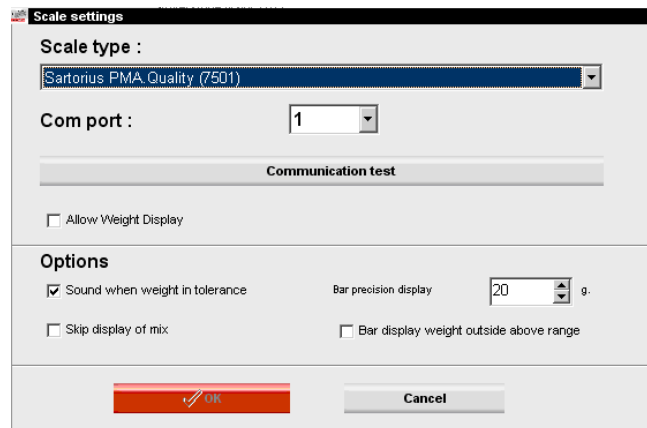


Figure 3-3

For the parameter named **Scale type**, use the **drop down button** to display the table of available scales.

Click on the item named **'Sartorius PMA Quality (7501)'** or the scale that you are using.

For the parameter named **Com port**: select the **number of the port** which the scale is connected to (usually COM 1).

To test your scale and connection, make sure that the scale is **turned off**, then click on the button named **'Communication test'**

A dialog box titled **Information** will appear. See Figure 3-4.

Ensure the **Test was successful**.

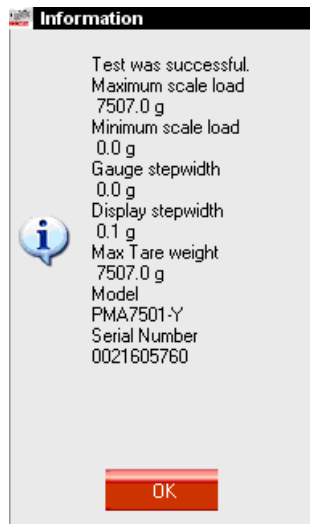


Figure 3-4

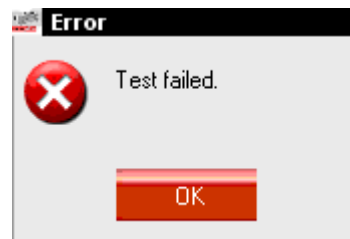


Figure 3-5

Click on the button named **OK**.

If the **Communications test** was not successful, a dialog box titled **'Error'** will appear. See Figure 3-5.

Click on the button named **'OK'**.

If this error message appears then **check the scale cable or communications settings** under Windows.

At this point you will return to the screen that is displayed in Figure 3-2. Click on the button named **'Save'**.

Virtual Scale

With the **'Virtual Scale'**, you can simulate a scale. This can come in useful if you are working offline, but have weighed in too much product. The virtual scale allows you to insert the amount you have actually weighed in and the program will recalculate the amounts needed for the other components of your formula.

Activities on the virtual scale will be handled the same way as a real scale: jobs are registered and can be processed via job maintenance.

The selection also gives you the possibility to use the computer as a scale display for a scale without display.

Connection test is not necessary or applicable. See Figure 9.6.

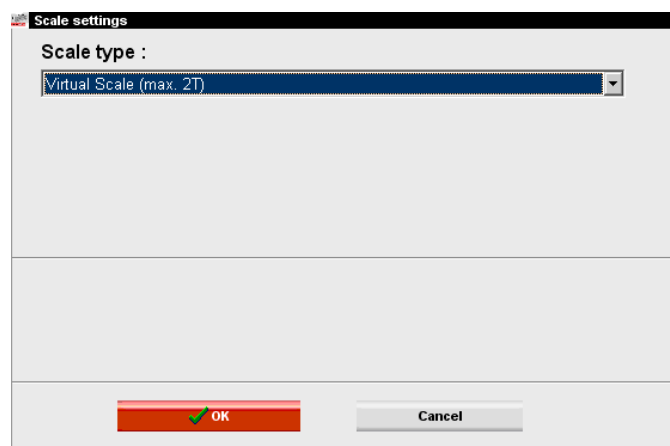


Figure 3-6

CRPlus Support

For more information or enquiries contact:

SALES / SOFTWARE:

Your Spies Hecker Business Manager,
Representative or Distributor

PENTAQ HARDWARE:

Pentaq Technology Pty Ltd
02 9821 4588