



STANDOWIN USERS MANUAL Standard Setup

Version – 2/2009

Contents

CONTENTS	2
ABOUT THE STANDOWIN COLOUR RETRIEVAL PROGRAM	3
CHECKING HARD DRIVE SPACE.....	5
STANDARD INSTALLATION OF STANDOWIN	6
UPDATING STANDOWIN	12
STANDOWIN SUPPORT	13

About the Standwin Colour Retrieval Program

Standwin is a Windows based Colour Retrieval program. It provides fast access to all the colour data you are likely to need and includes quarterly updates to keep you informed with up to the minute Vehicle Refinish Industry colour information changes and developments.

The minimum hardware requirements to run Standwin are:

Minimum hardware requirements

For the connection of 1 scale, label printer and Spectrophotometer

Minimum Hardware	Recommended Hardware
Pentium 300 MHZ	Pentium IV 3.0 GHZ
64 MB RAM	512 MB RAM
4 GB Hard Disk	20 GB Hard Disk
CD ROM Reader	DVD Reader
1 COM port	1 COM port
USB ports	USB ports
1 parallel port for report printer	1 parallel port for report printer
Minimum Operating System	Recommended Operating System
Windows 98 SE	Windows XP Pro SP2

Note: total number of COM ports & USB ports should allow:

1 Scale, 1 Label Printer and 1 Spectrophotometer

(plus other hardware for the PC that require USB or COM ports)

For the Connection of 1 or 2 EcoMix terminals

Minimum Hardware	Recommended Hardware
Pentium IV 3.0 GHz	Pentium IV 3.0 GHz
512 MB RAM	1 GB RAM
20 GB Hard Disk	20 GB Hard Disk
DVD Reader	DVD Reader
1 COM port	1 COM port
USB ports	USB ports
1 parallel port for report printer	1 parallel port for report printer
Recommended Operating System	Recommended Operating System
Windows XP Pro SP2	Windows XP Pro SP2

Note: total number of COM ports & USB ports should allow:
 1 or 2 EcoMix terminals, 1 Label Printer and 1 Spectrophotometer
 (plus other hardware for the PC that require USB or COM ports)

Note: Standwin is now compatible with Windows VISTA.

Standwin is a very user friendly colour retrieval system with a vast colour database to cover any refinish demand. The Standwin program is only available in CD format.

Checking Hard Drive Space

This program requires the following hard disk space:

2 gig of hard disk space

To check memory space available using:-

Windows 98/2000/ME/XP

- Double click on the **My Computer** icon
- Right click on the icon for the **C:\ drive**
- Left click on the properties
- Free space is listed

Windows Vista

- Click on 'Start', go to **My Computer**
- Free space is listed for the **C:\ drive**

Standard Installation of Standowin

(Not including Spectrophotometer, Pricing or Product Mixing Installation and additional modules)

Ensure that there are **no applications running**.

Insert the CD marked **Standowin** into the CD-ROM drive.

If setup does not start automatically, follow the steps outlined below:

Double click on **My Computer** from your windows desktop.

Double click on your **CD Rom Drive letter**, e.g. D:\

Double click on **Setup.exe**.

Installation will start automatically; the image shown in Figure 1-1 will appear.

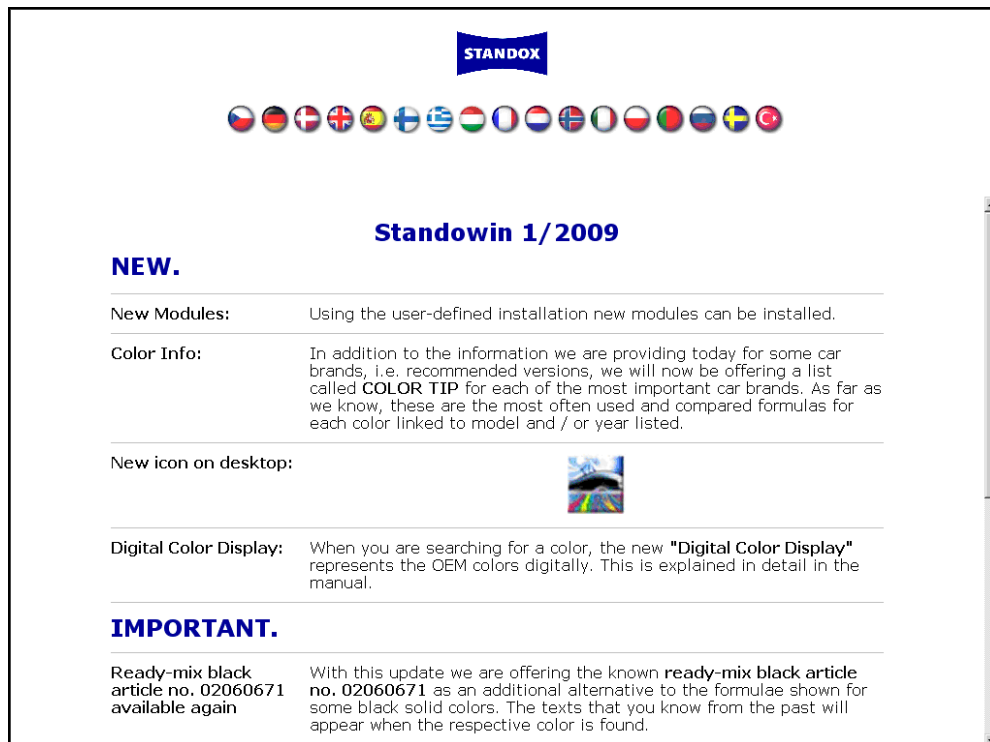


Figure 1-1

Scroll down and tick the box '**I read the Update Information!!**' See Figure 1-2.

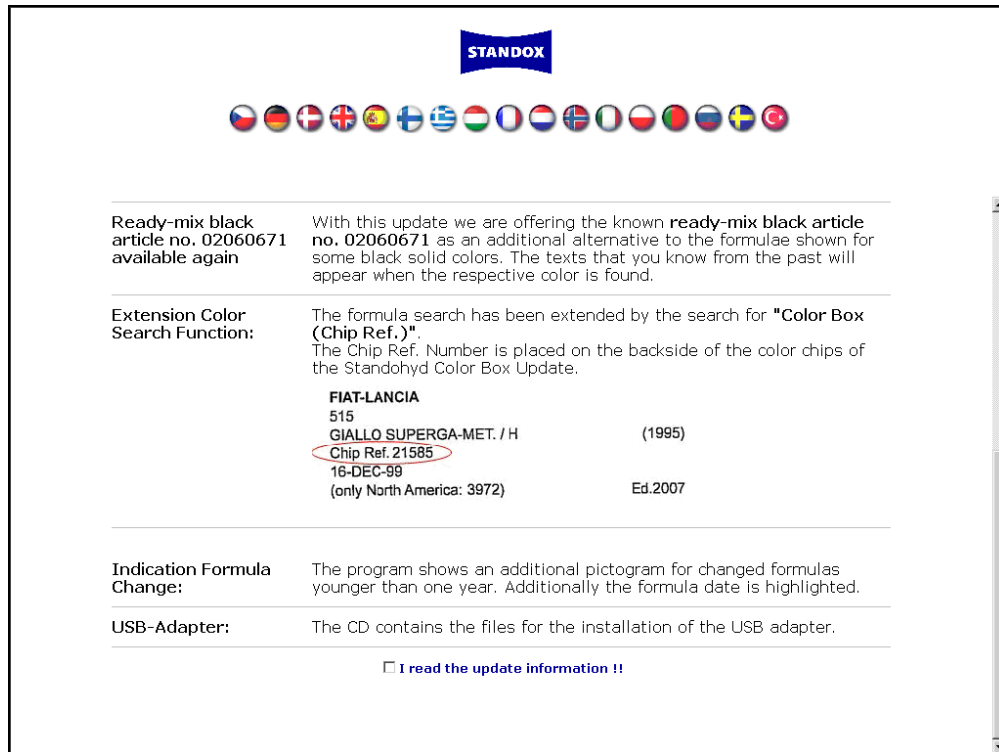


Figure 1-2

Click on the **'Weiter/Next'** button at the bottom of the page. See Figure 1-2 A.

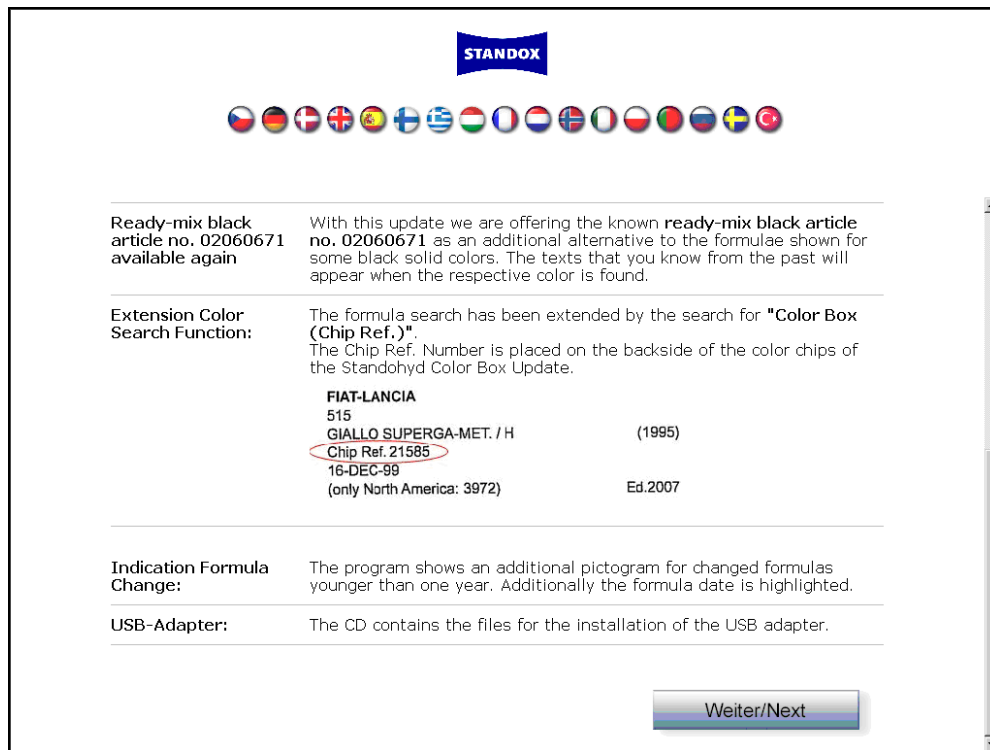


Figure 1-2 A

When you click on the button named **'Weiter/Next'**, the image displayed in Figure 1-3 will appear.



Figure 1-3

Click on the button named **'Install Standowin'**.

A dialog box titled **Welcome** will appear. See Figure 1-4.

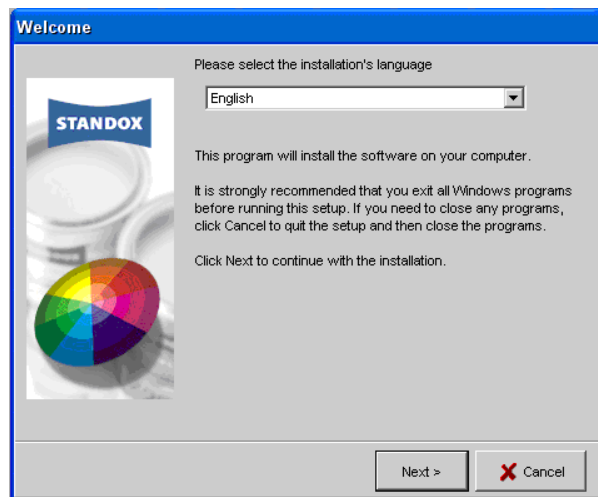


Figure 1-4

Ensure that the selected installation language is **'English'**.

Click on the button named **'Next'**.

A dialog box titled **'Software licence agreement'** will appear. See Figure 1-5.

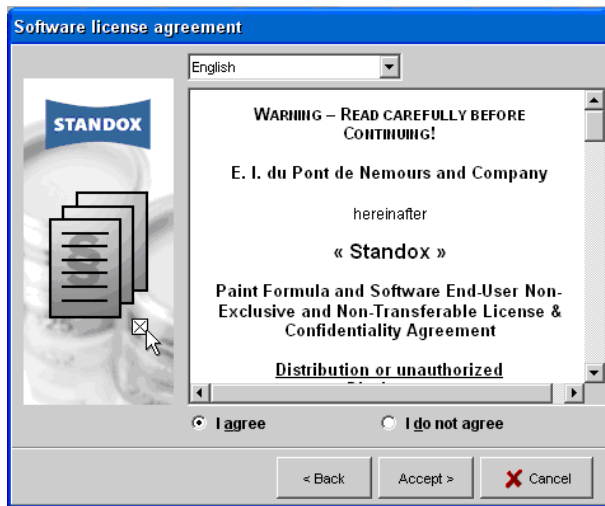


Figure 1-5

Select the option '**I agree**' for the Standox **Software licence agreement**.

Click on the button named '**Accept**'.

A dialog box titled '**Choose Destination Location**' will appear. See Figure 1-6.

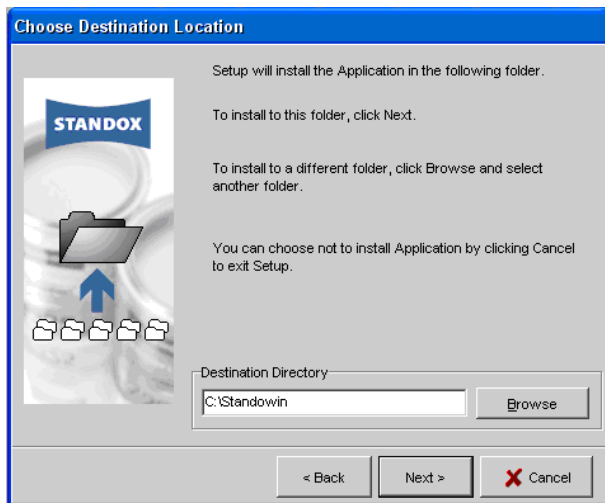


Figure 1-6

Click on the button named '**Next**'.

A dialog box titled '**Setup type**' will appear. See Figure 1-7.

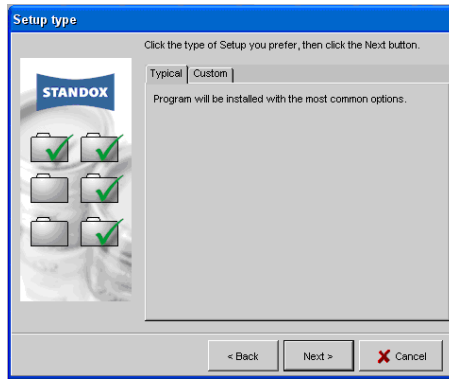


Figure 1-7

Click on the tab named '**Typical**'.

Click on the button named '**Next**' for the following 2 screens. See Figure 1-7 A and 1-7 B.

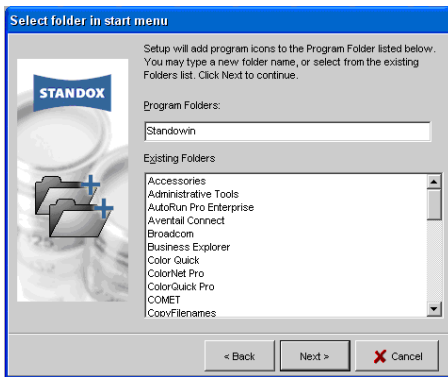


Figure 1-7 A

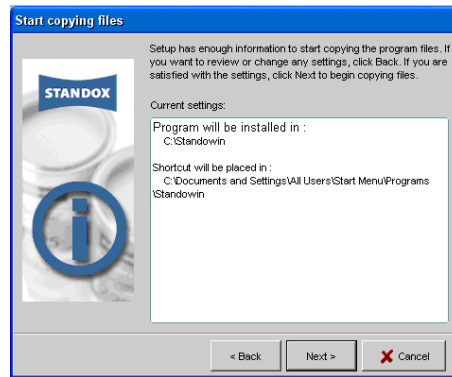


Figure 1-7 B

A dialog box titled '**Copying installation files**' will appear. See Figure 1-8.

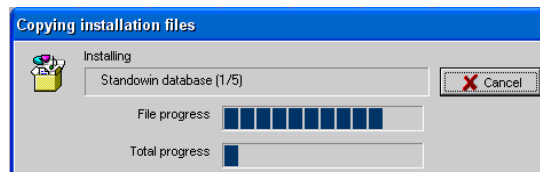


Figure 1-8

A visual gauge will appear to indicate the **status of the installation**.

A dialog box titled '**Setup complete**' will appear. See Figure 1-9.

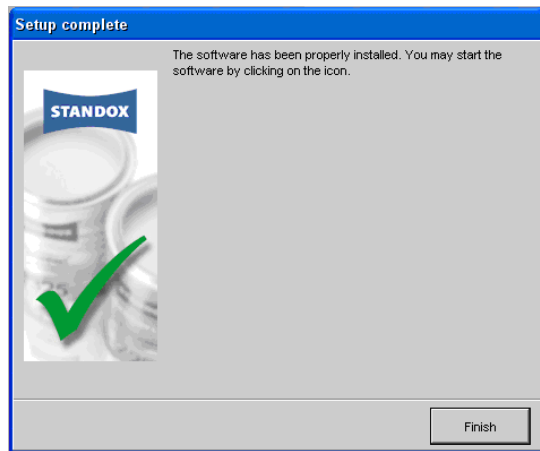


Figure 1-9

Click on the button named '**Finish**'.

You should now have a **Standowin** icon on your desktop.

Updating Standowin

The process for an **update** is the same as an initial installation. You should update the software in update order. Do not miss any updates as this may result in lost data or the program not to respond correctly.

Follow instructions in Section 1 from Figure 1-1 to Figure 1-9.

Before you start any updates, you should back up your personal database. Any **Custom Data** you may already have within Standowin will be **automatically backed up and re-imported**.

To see if your update has been successful, check the **program version** from the top left hand corner from the Standowin workspace title bar.

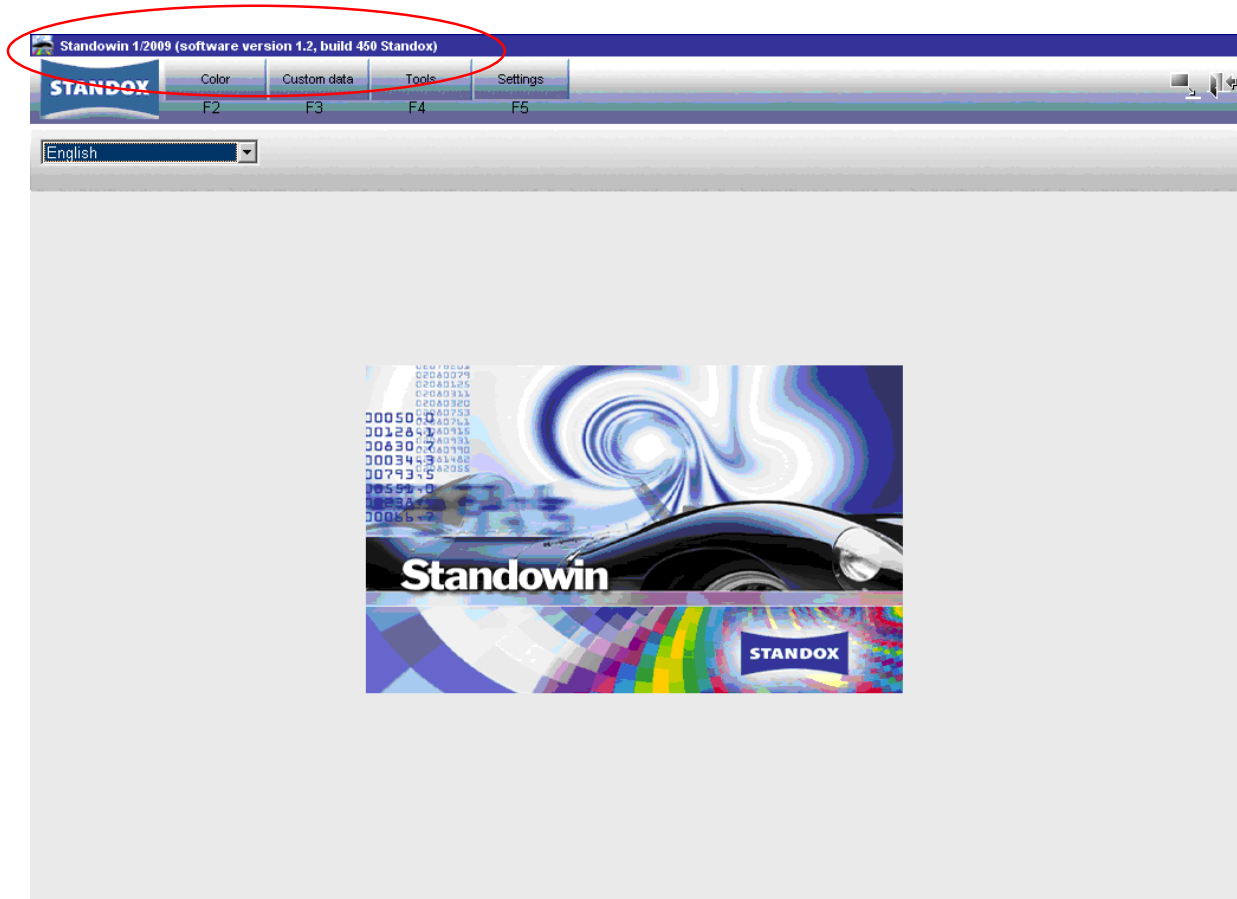


Figure 2-1

Standwin Support

For more information or enquiries contact:

SALES / SOFTWARE:

Your Stadox Business Manager,
Representative or Distributor

PENTAQ HARDWARE:

Pentaq Technology Pty Ltd
02 9821 4588